

THE ADVANTAGES THAT MAKE THE DIFFERENCE



AN ERGONOMIC CONTROL BOX :

- ▶ Lightweight and compact
- ▶ Extra-wide colour screen
- ▶ High brightness screen for viewing in full daylight
- ▶ Menu and intuitive navigation
- ▶ Autonomy : 2.5 hours
- ▶ Easily replaceable lightweight compact rechargeable battery.
- ▶ Battery compatible with LEADER Search, LEADER Hasty and LEADER Scan control boxes.
- ▶ Backup pack for 10 AAA batteries (not supplied). Makes the device functional even if the battery cannot be charged during rescue operation.

A MULTIFUNCTION DEVICE :

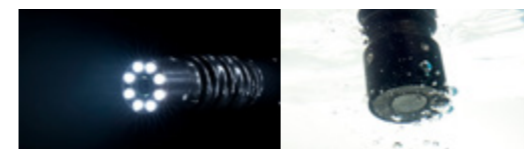
FUNCTIONS	IN SEARCH CAMERA MODE
Digital zoom x 2*	Yes
Headphone(s) volume adjustment*	Yes
Microphone volume adjustment*	Yes
Push to Talk*	Yes
Screen brightness adjustment*	Yes
Left- and right-handed use*	Yes
Image rotation* up (0°), down (180°)	Yes
Display of camera head position*	Yes
Display of illumination level of LEDs located on camera head*	Yes
Battery charge indication	Yes
Pictures capture*	Yes
Video recording* (without sound)	Yes
Photo and video gallery to display recordings	Yes
Audio recording (recording of sounds from the communication pole: communication between casualty and rescuer)	Yes

*Usable simultaneously

SEARCH CAMERA MODE :

ROBUST AND WATERPROOF CAMERA HEAD :

- ▶ 170° movement of camera head and 260° total field of view
- ▶ Camera protected by scratch-resistant sapphire lens
- ▶ Flexible camera joint head to absorb shocks
- ▶ Water-resistant to 2 m when camera fitted with plug
- ▶ Adjustable LED lighting with 8 intensity levels



ULTRALIGHTWEIGHT TELESCOPIC POLE :

- ▶ Telescopic from 1.1 to 2.4 m – Up to 4 m available
- ▶ Ultralightweight carbon-fibre construction
- ▶ "Articulated arm" supplied for mounting the control box on the pole



HIGH-PERFORMANCE NOISE-REDUCING AUDIO HEADPHONES :

- ▶ Noise-reducing design to provide great listening quality without disruptions.
- ▶ Microphone with integrated noise reducer for clear communication with casualties
- ▶ 1 or 2 sets of headphones can be connected simultaneously

LEADER Cam

Compact, lightweight and ergonomic

SEARCH CAMERA WITH BUILT-IN COMMUNICATION SYSTEM

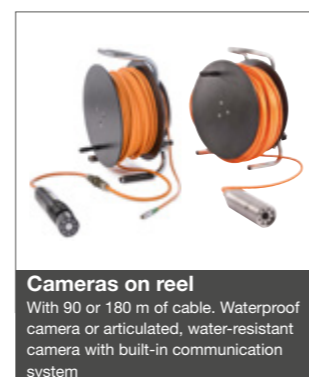
KEY POINTS

- ▶ Position of camera shown on screen
- ▶ Compact and lightweight
- ▶ Ergonomic control box
- ▶ Intuitive navigation interface and menu
- ▶ Extra-wide colour screen
- ▶ Ultralightweight telescopic pole

INCLUDED ACCESSORIES :



OPTIONAL ACCESSORY :



TECHNICAL DATA
PAGES 42 & 43



TECHNICAL DATA LEADER Cam

SEARCH CAMERA

AVAILABLE VERSIONS

Contents of case	1 control box +1 pole (2.4m)	1 control box +1 pole (4m)	1 control box +1 articulated camera on 90m reel	1 control box +1 articulated camera on 180m reel	1 control box +1 water-resistant camera on 90m reel
Ref	D11.04.342	D11.04.343	D11.04.344	D11.04.366	D11.04.345
Control box	1	1	1	1	1
Pair of noise-reducing earphones	1	1	1	1	0
Sunshade	1	1	1	1	1
Articulated camera on 2.4 m telescopic pole	1	0	0	0	0
Articulated camera on 4 m telescopic pole	0	1	0	0	0
Articulated camera on 90 m reel	0	0	1	0	0
Articulated camera on 90 m reel + 90 m extension on a second reel	0	0	0	1	0
Non-articulated camera (water-resistant to 90 m) on 90 m reel	0	0	0	0	1
Removable articulated arm (pole/control box mounting)	1	1	1	1	1
Shoulder strap	1	1	1	1	1
Hand strap	1	1	1	1	1
Water-resisting plugs (camera water-resistance accessory)	3	3	3	3	0
Battery	1	1	1	1	1
Charger	1	1	1	1	1
International connection adaptor kits	1	1	1	1	1
Spare battery pack (without batteries)	1	1	1	1	1
Photo/video SD memory card	1	1	1	1	1
Waterproof transport case	1	1	1	2	1
User manual	1	1	1	1	1

CONTROL BOX CHARACTERISTICS

CONTROL BOX	
Dimensions	L 24 x W 15.2 x H 5.1 cm
Control box weight without battery	1.1 kg
Control box weight with battery	1.380 kg
Control box material	Polypropylene
Anti-shock bumper	Rubber belt around the thickness
Shock resistance	Drop test performed up to 2 m.
Control box water and dust resistance	IP54
Autonomy	2 hours 30 min
Startup time	< 1 minute
Keyboard	Phosphorescent
Connections	3 metal ports for connecting earphones and camera
Connections water and dust resistance	IP68
Memory card	Slot for micro SD card for recording photos and videos
Software updating	By specific LEADER USB stick
Operating temperatures	From -10° to +60°C
Storage temperature	From -40° to +70°C
Control unit/pole mounting system	Yes, integral location on back of control box for fixing the supplied articulated control box/pole arm for connecting

SCREEN	
Type	TFT LCD
Resolution	7" - 800 x 480 px WVGA
Brightness	1000 candela/m2
Backlighting	LED
Colours	16-bit RGB
Protection	Transparent thermoplastic: 3 mm colourless scratch-resistant PMMA
Digital zoom	x2

SEARCH CAMERA CHARACTERISTICS

CAMERA UNIT	
Diameter	47 mm for entering standard 51 mm core holes
Camera articulation	170° (85° to right and 85° to left)
Field of view	260° in total
Type of articulation	Rotation by electric motor
Camera articulation control	From control box
Water resistance	Yes, to 2 m when plug fitted to camera unit (waterproof mode)
Lighting type	8 LEDs with 8 levels of illumination.
Microphone/loudspeaker	Integrated into camera for half-duplex communication with casualty
Response frequency	300 Hz to 3500 Hz

CAMERA	
Type of optics	Lens
Lens	Scratch-proof sapphire
Focal length	F = 3mm fixed
Opening	90°

POLE		
	2.4 m version	4 m version
Material	Carbon fibre	
Dimensions	Retracted: 1.10 m Extended: 2.40 m	Retracted: 1.10 m Extended: 4 m
Weight	1.4 kg	2 kg
Removable pistol grip	Yes	
Pole/control box mounting system	Yes, intended location at the back of the control box to fix an "articulated arm" which will allow to link the control box at the probe.	

NOISE-REDUCING HEADPHONES	
Weight	Approx. 430 g
Mono or Stereo	Stereo
Built-in microphone	Yes, to communicate with casualties in search camera mode
NRR (Noise Reduction Rating) hearing protection	23 dB
Number of simultaneously connectable pairs of earphones	2 pairs simultaneously connectable, one being optional (supplied with a Y connector for connecting 2 pairs of earphones to the same control box)

POWER SUPPLY

CONTROL BOX BATTERY	
Dimensions	L 6.5 x W 13 x H 3 cm
Weight	280 g
Type	4 Lithium Ion Polymer cells. 37 Wh
Capacity	2500 mA/hour
Autonomy	2 hours 30 min
Charging time	3 hours 30 min
Recharging cycles	500
Charging temperature	0° to +45°C
Water and dust resistance	IP67
Battery compatible and interchangeable	Yes with LEADER Search, LEADER Scan and LEADER Hasty
Charge level indication	Continuously displayed on control box screen

CHARGER + TRANSFORMER	
Charger dimensions	H 10.5 x W 4.5 x L 3.5 cm
Charger weight	200 g
Charger input voltage	100 = 240 VAC / 50-60 Hz
International connection adaptors	Yes: UK, EU, AUS, USA

SPARE BATTERY PACK	
Dimensions	L 6.5 x W 13 x D 3 cm
Weight with 10 batteries (not supplied)	300 g
Type and number of batteries required	10 x AAA-LR03 alkaline batteries
Autonomy	Approx. 1 h 30 m depending on the standard cell batteries brand

TRANSPORT CASE

TRANSPORT CASE	
Material	Rigid impact-resistant polypropylene shell
Suitable for air transport	Integral pressure equalising valve
Dimensions	H18 x W 43 x L121 cm
Empty weight	7.80 kg
Loaded case weight	14 kg
Water and dust resistance	IP67
Number of wheels	2
Colour	Orange