

TRAINING



FIRE SAFETY
TRAINING EQUIPMENT



AN INTERNATIONAL PRESENCE

SUBSIDIARIES AND A STRONG NETWORK OF DISTRIBUTORS





LEADER

Since 1985, LEADER **designs** and **manufactures** higher performing equipment used in **firefighting, fire training** and **search & rescue** applications and proposes them to Fire & Rescue Services, Civil Defense, Hazardous Industries, NGOs, Maritime Services, etc. on the 5 continents.

A major axis : INNOVATION

To meet the evolving challenges of fire hazards and search & rescue missions, equipment must continually **evolve** and **adapt** to be **more effective** while ensuring **maximum safety for workers**.

To meet these challenges, LEADER is committed to constant **innovation and new technologies** and has its own in-house **Research & Development** team which works alongside end-users to design and develop the equipment that will be proposed tomorrow.

To test our equipment and assess its performance, we at LEADER continually invest in our own infrastructure:

- ▶ Water and High-Expansion Foam test room (400 sq m)
- ▶ Ventilation test room (400 sq m)
- ▶ Casualty Search Equipment test area
- ▶ Fire test area in fire container - Fire extinguishing equipment

Our commitment

When you choose LEADER equipment, you are assured of the **quality and compliance of our products**. These have been made in our workshops by our engineering and electronics **specialists**.

ISO 9001 certified since 1999, LEADER:

- ▶ Carries out **checks** at every stage of the manufacturing process as well as on the finished products before dispatch,
- ▶ Provides **continuous training** for all its staff.

Guaranteed equipment

Every LEADER product comes with a specific contractual guarantee .

Close to our customers

Through our sales force, subsidiaries in **Germany and the USA, agencies in Latin America and China and an international distribution network**, LEADER is present worldwide, keeping us as close as possible to our customers.

An organisation at your service

For optimal and long-term use of the equipment you purchase, LEADER can propose suitable training **on the handling, on the use and maintenance of the equipment**. Training can be done at our site or on site.



CONTENTS

FIRE RISK PREVENTION TRAINING EQUIPMENT

Specially designed for fire safety trainers, the LEADER range of fire training equipment enables you to **organise realistic and dynamic exercises** corresponding to different emergency situations when a fire breaks out.



FLAME GENERATORS

P.6

MOBILE PANS AND TRAINING ACCESSORIES

FOR ENVIRONMENTALLY FRIENDLY FIRE SAFETY TRAINING



TRAINING EXTINGUISHERS

P.16

RECHARGEABLE IN LESS THAN 5 MINUTES

INDISPENSABLE TO OPTIMISE YOUR TRAINING COSTS



SMOKE GENERATORS

P.18

TO SIMULATE A SMOKE-FILLED SPACE

FOR ALL YOUR REALISTIC BUT SAFE EVACUATION DRILLS AND FIRE TRAINING



Flame generators

For more than 15 years LEADER has been designing and manufacturing Flame Generators that are ideal for delivering fire safety training to any company's employees, while being **environmentally friendly**, **non-hazardous to health**, and **meeting trainees' safety requirements**.

These stainless-steel Flame Generators run on propane gas. With or without water, they produce **powerful, hot flames** with controllable height from 0.2m to 3m depending on the model.



GF42

COMPACT & LIGHTWEIGHT

- ▶ QUICK TO SET UP
- ▶ EASY TO TRANSPORT

Without water

Surface area of fire: **0.42 sq m**

Flame height: **up to 1.20 m**



AEROS 2

COMPACT FOR POWERFUL FLAMES

- ▶ EASY TO TRANSPORT
- ▶ IMPRESSIVE OIL-SLICK FIRE EFFECT
- ▶ SOLENOID VALVE FOR AUTOMATIC GAS CONTROL

Volume of water: **35 litres**

Surface area of fire: **0.50 sq m**

Flame height: **up to 1.50 m**



PYROS 3

HIGH, POWERFUL FLAMES FOR REALISTIC TRAINING

- ▶ IMPRESSIVE OIL-SLICK FIRE EFFECT
- ▶ POWERFUL, HOT FLAMES
- ▶ WIRELESS REMOTE CONTROL
- ▶ ERGONOMIC CONTROL CONSOLE
- ▶ SOLENOID VALVE FOR AUTOMATIC GAS CONTROL

Volume of water: **62 litres**

Surface area of fire: **0.83 sq m**

Flame height: **up to 3 m**



OPTIONAL ACCESSORIES COMPATIBLE WITH ALL FLAME GENERATORS

To customise training sessions and familiarise trainees with all fire extinguishing situations, LEADER offers training accessories compatible with all Flame Generators, capable of simulating specific situations such as computer screen fires, rubbish bin fires, chip pan fires, electric motor fires, aerosol explosions and reaction of water on contact with boiling oil.

The ease and speed of set-up of these accessories on the adaptor, which itself is easily positioned on the pan, will enable you to run multiple examples of fires in a minimum time.

TRAIN IN COMPLETE SAFETY

We know just how important safety is during training sessions, so LEADER has enormously developed this aspect: fire-resistant connecting cable, control console with emergency stop button, gas control solenoid valve, positive safety control, etc.





GF42

No water
Surface area of fire: **0.42 sq m**
Flame height: **up to 1.20 m**

COMPACT & LIGHTWEIGHT

WATERLESS FIRE PAN

- ▶ Easy to use
- ▶ Lightweight, takes up little space
- ▶ Produces flames up to 1.20 m in height
- ▶ 10-position flame height control
- ▶ Works with any kind of extinguishing equipment: all types of fire extinguishers, nozzles, foam units, etc.

TRAIN IN COMPLETE SAFETY

- ▶ Fire is controlled (ignited) via remote control cable

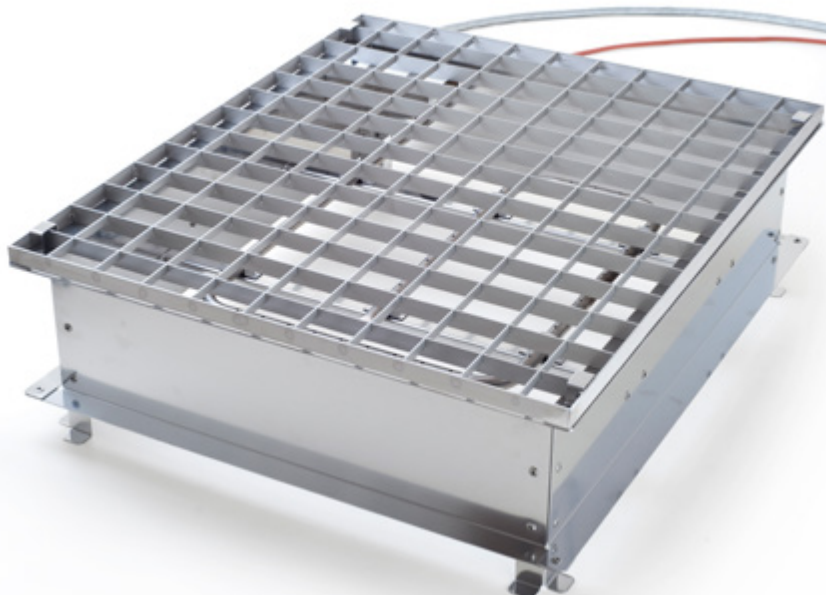
GAS SUPPLY

- ▶ From an industrial-type propane gas bottle with no flow limiter
- ▶ From two domestic propane gas bottles with flow limiter



KEY POINTS

- ▶ Easy to transport
- ▶ Quick set-up
- ▶ Simple to use



TECHNICAL CHARACTERISTICS

GF42 waterless fire pan		<ul style="list-style-type: none"> - Material: stainless steel - Dimensions: L70 x D63 x H28 cm - Weight: 14.3 kg
Remote-control cable	V90.00.024	<ul style="list-style-type: none"> - Splash-proof housing - Pushbutton with protection against accidental ignition - Powered by 9V-6LR61 battery (not supplied) - 6-metre fire-resistant electric cable (standard IEC 331).
Armoured gas supply hose	V90.80.057	<ul style="list-style-type: none"> - 6m flexible connector to standard EN 559 - Flowrate: 12 kg/h - Connects to industrial-type propane gas bottle without flow limiter
Gas supply kit without pressure reducing valve	V90.80.066	<ul style="list-style-type: none"> - To connect two domestic propane gas bottles with flow limiter - Do not use with explosion cage module (Ref V90.80.072) or oil explosion module (Ref V90.80.073).
Basic kit: V90.00.033		

VARIANT for better control of the fire

	<p>GF42 pan + solenoid valve module</p> <p>Kit contents:</p> <ul style="list-style-type: none"> - 1 x GF42 pan - 1 x wired remote control with pushbutton - 1 x solenoid valve module housing and its 12V battery, - 1 x gas pressure reducing valve for 1 gas bottle and associated supply flexible connector - 1 x charger,
Ref : V90.00.038	

OPTIONAL ACCESSORIES



Single pressure reducing valve

Ref : V90.80.052

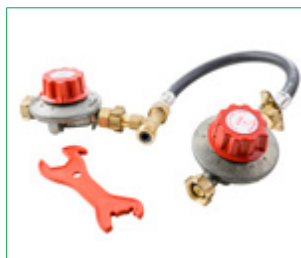
For use with 1 domestic propane bottle with flow limiter



Solenoid valve module

Ref : V90.80.076

For automatic instantaneous gas control.



Pressure reducing kit

Ref : V90.80.053

For use with 2 domestic propane bottles with flow limiter.



Flexible connector

Ref : V90.80.051

With safety pedal.



Annual maintenance

Essential for long-term safe use.

3-year contract

As part of our policy of constant research to improve our products, we reserve the right to modify our products' technical characteristics at any time without notice. Images not contractual.



AEROS 2

Volume of water: **35 litres**
Surface area of fire: **0.50 sq m**
Flame height: **up to 1.50 m**

COMPACT WITH POWERFUL FLAMES

FIRE PAN WITH WATER

- ▶ Impressive oil-slick fire effect: The water allows the fire to spread evenly across the entire surface of the pan
- ▶ Produces powerful realistic flames rising to a height of up to 1.5 m
- ▶ 10-position flame height control
- ▶ Intense heat radiation, can be felt on the skin
- ▶ Works with all types of fire extinguishing equipment: all types of fire extinguishers, nozzles, foam units etc.

A FUNCTIONAL FIRE PAN

- ▶ Tilting legs make pan easy to drain
- ▶ Increased ground contact area enables use on loose ground

TRAIN IN COMPLETE SAFETY

- ▶ Wired remote control for control of the fire (ignition and extinction)
- ▶ Integrated solenoid valve for automatic and instantaneous gas control

GAS SUPPLY

- ▶ From an industrial-type propane gas bottle without flow limiter
- ▶ From two domestic propane gas bottles with flow limiter



KEY POINTS

- ▶ Impressive oil-slick fire effect
- ▶ Easy to transport
- ▶ Integrated safety solenoid valve for automatic and instantaneous gas control



TECHNICAL CHARACTERISTICS

AEROS 2 fire pan with water	V90.00.036	- Material: 304 stainless steel - Dimensions : L97.5 x D63 x H24 cm - Weight: 20.8 kg - Built-in rechargeable 12V battery.
Wired remote control		- Hand-held fire initiation and extinguishing by protected pushbutton - 6-m fire resistant electric cable (standard IEC 331)
Armoured gas supply hose	V90.80.057	- 6-m flexible connector to standard EN 559 with pressure reducing valve - Flowrate: 12 kg/h - Connects to industrial type propane gas bottle without flow limiter
Basic kit: V90.00.036 + V90.80.057		



OPTIONAL ACCESSORIES



Pressure reducing kit

Ref : V90.80.053

For use with 2 domestic propane bottles with flow limiter.



Quick coupling kit

Ref : V90.80.058

For quickly and easily connecting the flexible connector to the fire pan.



Annual maintenance

Essential for long-term safe use.
3-year contract

As part of our policy of constant research to improve our products, we reserve the right to modify our products' technical characteristics at any time without notice. Images not contractual.



PYROS 3

Volume of water: **62 litres**
 Surface area of fire : **0.83 sq m**
 Flame height: **up to 3**

HIGH, POWERFUL FLAMES FOR REALISTIC TRAINING

FIRE PAN WITH WATER

- ▶ Impressive oil-slick fire effect: The water allows the fire to spread evenly across the entire surface of the pan
- ▶ Produces realistic and very powerful flames rising to as much as 3 m in height
- ▶ Flame height controlled by a pressure gauge on the console
- ▶ Very intense heat radiation, can be felt on skin
- ▶ Works with all types of fire extinguishing equipment: all types of fire extinguishers, nozzles, foam units etc.

A FUNCTIONAL FIRE PAN

- ▶ Easy drainage ensured by:
 - Handles for secure handling of the pan,
 - Wheels allow pan to be moved easily and tilted effortlessly
- ▶ Storage space next to the igniter for the wired and wireless remote controls



KEY POINTS

- ▶ Large surface area of fire
- ▶ Powerful flames with intense heat radiation
- ▶ 2 remote controls supplied (wireless and wired)
- ▶ Ergonomic, easily transportable control console
- ▶ Integrated safety solenoid valve for automatic and instantaneous gas control



COMPLETELY SAFE TRAINING WITH TRAINEE EVEN CLOSER TO REAL FIRE

- ▶ Two remote controls supplied for controlling the fire (ignition and extinction)
 - One wireless remote control: convenient when accompanying the student towards the fire without a cable
 - One wired remote control
- ▶ Integrated solenoid valve for automatic and instantaneous gas control
- ▶ Emergency stop button on console



Storage space/Electronic compartment
Gas supply connections

AN ERGONOMIC CONSOLE

- ▶ Lightweight and stable
- ▶ Can connect 1 or 2 gas bottles
- ▶ Easy to transport: store in pan during transport
- ▶ Console has:
 - 2 gas supply taps
 - 1 flowrate adjuster for adjusting flame height
 - 1 pressure gauge for continuous gas pressure monitoring
 - 1 emergency stop button



Console stows away in pan for transport

GAS SUPPLY


- ▶ From one or two industrial-type propane gas bottles without flow limiter

TECHNICAL CHARACTERISTICS

PYROS 3 fire pan with water	<ul style="list-style-type: none"> - Material: stainless steel - Dimensions : L117 x D96.5 x H26 cm - Weight: 41.8 kg - Fire surface area: 0.83 sq m - Volume of water: 62 litres - Integrated rechargeable 12V battery. - IP67 water- and dust-resistant connectors with protective caps. - Packaging: cardboard box on 1 x 1.2 m pallet
Fuel supply console	<ul style="list-style-type: none"> - Material: stainless steel - Dimensions : L57 x D39.5 x H99 cm - Weight: 8.8 kg - Supply pressure adjustment from 0 to 3 bar by pressure reducing valve fitted with pressure gauge - "Punch" safety button for emergency shutoff. - IP67 water- and dust-resistant connectors with protective caps. - Gas supply from 1 or 2 industrial-type propane gas bottles without flow limiter. - Easy-to-transport console: stows easily inside the fire pan.
Armoured gas supply hose	<ul style="list-style-type: none"> - Length : 6 metres, with screw connectors. - Ignition flowrate = 36 kg/h (1 bar), nominal flowrate = 59 kg/h (2 bar). - Electric cable: length 9 m – fire resistance (standard IEC 331).
Wired remote control	<ul style="list-style-type: none"> - Hand-held fire initiation and extinguishing via protected pushbutton. - Splash-proof handle. - Electric cable: length 9 m - fire resistance (standard IEC 331).
Wireless remote control	<ul style="list-style-type: none"> - Splash-resistant. - 30-metre range. <p><small>*Fréquence 433 MHz utilisable en Union Européenne. Autres pays : se renseigner.</small></p>
<p>Ref. V90.00.040: PYROS 3 WITH WIRED REMOTE CONTROL AND WIRELESS REMOTE CONTROL (433 MHz – frequency subject to regulations*)</p> <p>Ref. V90.00.041: PYROS 3 WITH WIRED REMOTE CONTROL ONLY</p>	



OPTIONAL ACCESSORY



Annual maintenance

Essential for long-term safe use.
3-year contract

*As part of our policy of continual research into improving our products, we reserve the right to modify our products' technical characteristics at any time without notice.
Images not contractual*



PYROS with electrical cabinet module

TRAINING ACCESSORIES

COMPATIBLE WITH ALL LEADER FLAME GENERATORS

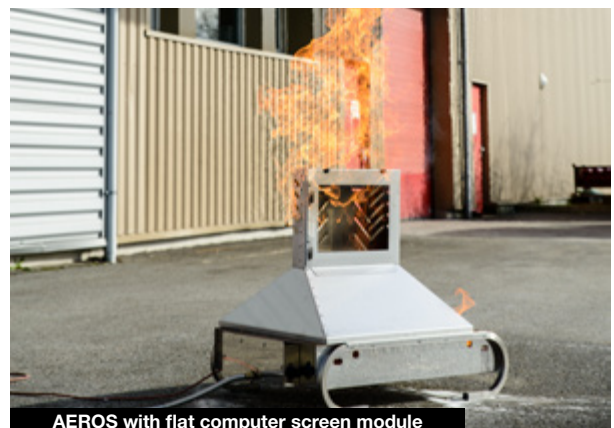
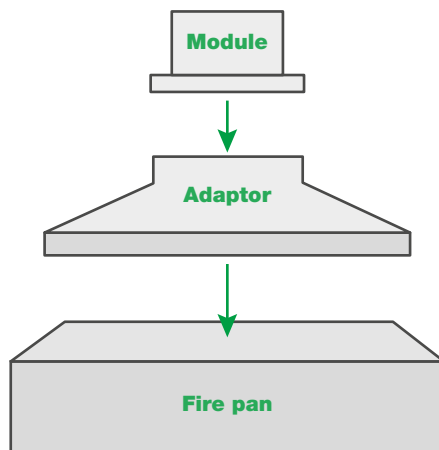
FOR CUSTOMISING AND VARYING YOUR TRAINING SESSIONS

To **familiarise** students with all fire extinguishing situations, LEADER offers modules for all of its flame generators capable of **simulating specific situations**: computer screen fire, rubbish bin fire, chip pan fire, electrical cabinet fire, aerosol explosion, electric motor fire and oil explosion.

These training modules give trainees the chance to practise:

- ▶ recognising the type of fire (class A, B, C, D or F fires)
- ▶ selecting the appropriate extinguisher (water spray, water plus additive, powder, CO2 or foam)
- ▶ using the right technique to put the fire out (spraying the extinguishing agent onto the fire, covering the fire with a wet cloth, etc.)

SETUP



AEROS with flat computer screen module

As part of our policy of constant research to improve our products, we reserve the right to modify our products' technical characteristics at any time without notice. Images not contractual.

ADAPTORS

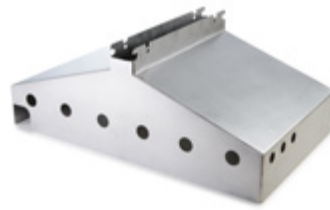
Necessary for installing the training modules



Adaptor for GF42 and AEROS 2

Ref : V90.80.074

H: 27.5 cm / L: 71.0 cm / D: 615 cm / Weight: 8 kg



Adaptor for PYROS 3

Ref : V90.80.077

H: 29 cm / L: 73 cm / D: 45 cm / Weight: 9 kg

TRAINING MODULES

compatible with adaptors for the LEADER GF42, AEROS 2 and PYROS 3 pans



Flat computer screen

Ref: V90.80.071

H: 38.0 cm / L: 46.5 cm / D: 8.5 cm (base: 14.5 cm) / Weight: 4.6 kg



Bin

Ref: V90.80.062

Fits onto the flat computer screen module (Ref. V90.80.071).
H: 35.5 cm / L: 39.5 cm / P: 18.0 cm / Weight: 2.9 kg



Chip pan fire

Ref : V90.80.070

Mounts on top of the flat computer screen (Code V90.80.071) and the bin (Code V90.80.062).
H: 14 cm / L: 39.5 cm / D: 26 cm / Weight: 1.4 kg



Electrical cabinet

Ref: V90.80.075

1 Door with removable key which mounts on the flat computer screen module (Code V90.80.071).
H: 38.0 cm / L: 46.5 cm / D: 11.0 cm (base: 14.5 cm) / Weight: 6.5 kg



AEROS with aerosol explosion module



Electric motor

Ref : V90.80.063

H: 35.5 cm / L: 32.5 cm / D: 56 cm / Weight: 6.8 kg



Aerosol explosion

Ref : V90.80.072

For use with LEADER aerosols only.
H: 22.5 cm / L: 26 cm / D: 20 cm / Weight: 6.9 kg
Not to be used with pressure reducing kit (Ref. V90.80.053)



Oil explosion

Ref : V90.80.073

For use with vegetable oil only.
H: 45.0 cm / L: 26 cm / D: 30.0 cm / Weight: 2.8 kg
Not to be used with pressure reducing kit (Ref. V90.80.053)



TRAINING FIRE EXTINGUISHERS

REFILLABLE WITH WATER IN LESS THAN 5 MINUTES

Essential at any fire safety training session, the LEADER training extinguisher has **all the characteristics of a real fire extinguisher** except that refilling is much **faster, simpler and less expensive** than with conventional extinguishers.

KEY POINTS

- ▶ Economical
- ▶ Quick and easy to set up
- ▶ Low maintenance
- ▶ Three versions available

3 VERSIONS AVAILABLE



Auxiliary pressure fire extinguisher

Ref : V90.00.000



Permanent pressure fire extinguisher

Ref : V90.00.001



CO₂ type fire extinguisher

Ref : V90.90.023

QUICK AND EASY TO SET UP

- ▶ Identical handling and appearance to standard extinguisher
- ▶ Handles well
- ▶ Quality spray
- ▶ Duration:
 - Auxiliary and permanent pressure fire extinguishers: 30 seconds (6 litres at 15 bar)
 - CO₂ type fire extinguisher: 30 seconds (2 litres at 15 bar)

SIMPLE, INEXPENSIVE REFILLING

- ▶ Fire extinguisher pays for itself in less than seven refills: uses water at 15 bar to simulate the extinguishing agent
- ▶ Refill by trainer in less than 5 minutes
- ▶ Removable head with wide opening on screw thread for quick and easy refilling

SIMPLE TO PRESSURISE USING

- ▶ A foot pump (not included)
- ▶ A 15-bar compressor (not included)*
 - Either using the "Schrader" type valve from the fire extinguisher (the CO₂ type requires use of the special V90.90.021 connector)
 - Or using a connector that fits on the spray hose

*15 bar compressor: consult us



TECHNICAL CHARACTERISTICS

Height: 58 cm

Diameter: 15 cm

Weight: 4.3 kg

Maximum capacity of tanks:

- ▶ Auxiliary pressure fire extinguisher: 6 litres
- ▶ Permanent pressure fire extinguisher: 6 litres
- ▶ CO₂ type fire extinguisher: 2 litres



These fire extinguishers are designed for training use only. They must not be used or installed as standard fire extinguishers.

As part of our policy of constant research to improve our products, we reserve the right to modify our products' technical characteristics at any time without notice. Images not contractual.



SMOKE GENERATORS

LEADER Smoke

FOR DENSE, REALISTIC SMOKE FOR EVACUATION DRILLS AND COMPLETELY SAFE TRAINING SESSIONS!

ADJUSTABLE FLOW RATE

- ▶ Produces light smoke or dense smoke.

PROGRAMMABLE EMISSION

- ▶ Controlled volume of smoke required for each scenario (to fill small and large volumes),
- ▶ Select length of time for which smoke is to be produced,
- ▶ Select time interval between smoke emissions.

PERMANENT HEATING SYSTEM

- ▶ Continuous dense smoke production in order to avoid interruptions of operation during the programmed period.

ROBUST COMPACT DESIGN

- ▶ Impact-resistant, splash-resistant outer casing
- ▶ Easy to transport
- ▶ Takes up little space

DETACHABLE STURDY REMOTE CONTROL

- ▶ For initiating remote production of smoke

CONTINUOUS OPERATION AT REDUCED FLOWRATE BY DEFAULT

- ▶ For maximum economy of fluid.



Removable remote control



KEY POINTS

- ▶ Even more realistic training
- ▶ Programmable smoke production
- ▶ Remote initiation possible
- ▶ Simple low-level maintenance.

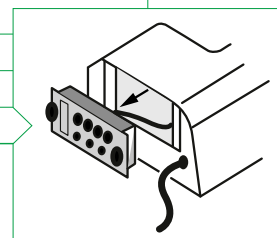
TECHNICAL CHARACTERISTICS



LEADER Smoke 2

LEADER Smoke 4

Reference	R20.00.103	R20.00.104
Heater	1000 W	1500W Hi-Mass technology
Start-up time	7 minutes	8 minutes
Direct thermal protection	Yes (DTPD system: Direct Thermal Protection Device)	
Approximate flowrate	500 m ³ /min in continuous low-flowrate operation	1000 m ³ /min in continuous low-flowrate operation
Power consumption	4.5 A @ 220 V	7 A @ 220 V
Dimensions	500 x 225 x 165 mm	685 x 345 x 225 mm
Weight	11 kg	19 kg
Removable remote control	Yes (5 m of cable)	
Recommended fluid	LEADER Smoke fluid Any defect resulting from the use of fluids other than our own is not covered by the warranty.	
Capacity of built-in tank	1 x 2,5 litres	1 x 9,5 litres
Fluid consumption	75 ml/min	150 ml/min



OPTIONAL ACCESSORIES

Smoke removal piping:
Ref : 926.220.24
5 m of 104 mm piping with adaptor.

LEADER SMOKE FLUID

FOR DENSE, REALISTIC, SAFE SMOKE



LEADER SMOKE FLUID

Ref : R20.00.107

Refill delivered in boxes of 4 x 5-litre cans.

Water- and glycol-based, the smoke produced is completely non-toxic.

- ▶ **Slight deposit** on the walls of the space where the smoke is produced, on the people and on equipment (ventilate the space after use).
- ▶ **Ecological, environmentally safe** fluid.
- ▶ **Ideal for a highly realistic exercise:** smoke density adjustable from very light to very dense
- ▶ **Economical:** long suspension time, 30% longer than other fluids available on the market!
- ▶ **Multi-purpose:** Ideal for small volumes (approx. 100 m³) & large volumes (approx. 2000 m³)

As part of our policy of constant research to improve our products, we reserve the right to modify our products' technical characteristics at any time without notice. Images not contractual.



WARRANTY

LEADER guarantees its products from the date of acceptance by the customer.

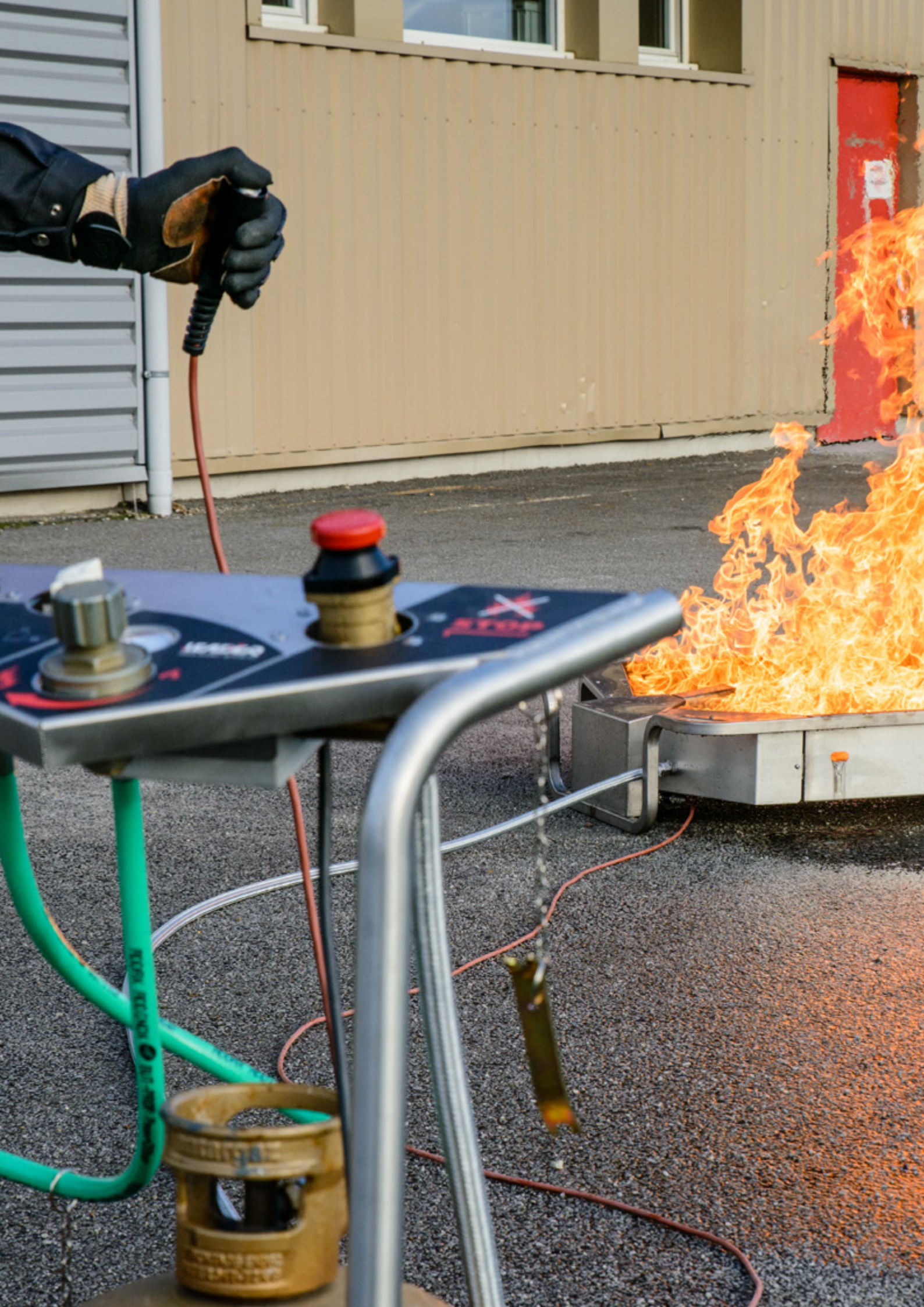
The respective warranty periods are as follows:

- ▶ Fire pan and fuel supply console (PYROS 3, AEROS 2, GF42): 1 year
- ▶ Flame generator accessories (training modules): 1 year
- ▶ LEADER SMOKE smoke generators: 2 years
- ▶ Training fire extinguishers: 1 year
- ▶ Batteries and igniters: 6 months

This warranty does not apply where it has been found by our services that the equipment was damaged by:

- ▶ Normal wear due to operation
- ▶ An improper use of the equipment
- ▶ Accidents arising from carelessness
- ▶ A defective maintenance
- ▶ Failure to follow the standards and instructions of the manufacturer
- ▶ Improper storage

Consumables, such as pipes, legs, remote control cables, wheels, paint and labels etc. are excluded from the warranty if the faults are discovered after the first use of the product.





ALWAYS IN TOUCH WITH OUR CLIENTS
TO DESIGN THE PRODUCTS YOU WILL
NEED **IN THE FUTURE**



Foam concentrates & Foam Equipment



Mobile ventilation



Search and rescue equipment



Fire training equipment

HEAD OFFICE

LEADER S.A.S.
ZI des Hautes-Vallées - Chemin n° 34 - CS20014 - 76930 Octeville sur Mer - France
Tel +33 (0)235 530575 - Fax +33 (0)235 531632
info@leader-group.eu

SUBSIDIARIES

LEADER GmbH
Zur Fabrik 10 - 66271 Kleinblittersdorf - Germany
Tel. : +49 (0) 6805/60067-0 - Fax : +49 (0) 6805/60067-10
info@leader-gmbh.de

LEADER NORTH AMERICA Inc.
109-A Summerville Drive, Mooresville, NC28115 - U.S.A
Tel: + 1 (0)704-662-3377 - Fax: + 1 (0)704-662-3397
info@LeaderNorthAmerica.com

AGENCIES

SPAIN / PORTUGAL / LATIN AMERICA
spain.portugal.latinamerica@leader-group.eu

CHINA / HONG KONG / MACAU
china@leader-group.eu

www.leader-group.eu