

FIRE FIGHTING



MOBILE VENTILATION

RESPONSE EQUIPMENT



AN INTERNATIONAL PRESENCE

SUBSIDIARIES AND A STRONG NETWORK OF DISTRIBUTORS





LEADER

Since 1985, LEADER **designs** and **manufactures** higher performing equipment used in **firefighting, fire training** and **help and rescue** applications and proposes them to Fire & Rescue Services, Civil Defense, Hazardous Industries, NGOs, Maritime Services, etc. on the 5 continents.

A major axis : INNOVATION

To meet the evolving challenges of fire hazards and search & rescue missions, equipment must continually **evolve** and **adapt** to be **more effective** while ensuring **maximum safety for workers**.

To meet these challenges, LEADER is committed to constant **innovation and new technologies** and has its own in-house **Research & Development** team which works alongside end-users to design and develop the equipment that will be offered tomorrow.

To test our equipment and assess its performance, we at LEADER continually invest in our own infrastructure:

- ▶ Water and High-Expansion Foam test room (400 sq m)
- ▶ Ventilation test room (400 sq m)
- ▶ Casualty Search Equipment test area
- ▶ Fire test area in fire container
- Fire extinguishing equipment

Our commitment

When you choose LEADER equipment, you are assured of the **quality and compliance of our products**. These have been made in our workshops by our engineering and electronics **specialists**.

ISO 9001 certified since 1999, LEADER:

- ▶ Carries out **checks** at every stage of the manufacturing process as well as on the finished products before dispatch,
- ▶ Provides **continuous training** for all its staff.

Guaranteed equipment

Every LEADER product comes with a specific contractual guarantee .

Close to our customers

Through our sales force, subsidiaries in **Germany and the US, agencies in Latin America and China and an international distribution network**, LEADER is present worldwide, keeping us as close as possible to our customers.

An organisation at your service

For optimal and long-term use of the equipment you purchase, LEADER can offer suitable training **on the handling, on the use and maintenance of the equipment**. Training can be offered at our site or on site.



CONTENTS

VENTILATION EQUIPMENT FOR FIRE INTERVENTION AND INDUSTRIAL APPLICATIONS

EASY POW'AIR TECHNOLOGY: A LEADER CONCEPT

P8

VENTILATION TECHNIQUES FOR FIRE RESPONSE

P10

VENTILATING LARGE VOLUMES

P12

VENTILATION IN ATEX ZONES

P14

VENTILATION IN CONFINED SPACES

P16

THE RANGE AT A GLANCE

P6

PETROL-DRIVEN FANS

P18

ELECTRIC FANS

P28

WATER-DRIVEN FANS

P38

LARGE-FLOW VENTILATORS

P42

VENTILATION ACCESSORIES

P48

LEADER HAS DEVELOPED **EASY POW'AIR TECHNOLOGY:**

A POWERFUL, CONCENTRATED JET OF AIR: A LEADER INNOVATION

The speed and concentrated shape of the Easy Pow'Air jet entrains surrounding air, thereby increasing the fan's flow rate.



CREATES SPACE FOR RESPONSE TEAMS WORKING AROUND DOORS

The force and stability of the jet gives **constant and optimal efficiency from 2 to 6 m** between fan and opening.

This creates valuable space for interventions teams working in /around the entrance. The fans can also be positioned as close as 0.90 m.

The increased distance reduces noise levels for responders.



SIMPLE SET-UP

Automatic +10° tilt: when raised, the lifting handle automatically positions the fan at its optimal angle of tilt.

Fine adjustment of the tilt from +10° to +20° is also possible.

EASY TO VENTILATE UP ENTRANCE STEPS

The ability to withdraw the apparatus and tilt it to its maximum angle makes ventilation possible in these situations: raised doors and windows, entrance steps, landings

Ventilation on a slope: Its optional prop allows the fan to be aimed down at an angle of -10°. Very useful for basement work.



EXTENDED APPLICATIONS USING ACCESSORIES

Blowing ducts, extraction ducts, high-expansion foam adaptor, mister, etc. These options increase the number of ways a fan can be used and so circumvent the constraints of a given operation.

NEO LEADER Fan

EASY POW'AIR
TECHNOLOGY



INNOVATION 2015

THE NEW NEO CONCEPT FOR EVEN MORE EFFICIENT LEADER FANS!

Drawing on Easy Pow'Air technology, LEADER's engineers have developed the NEO concept:

an optimal combination of GRILLE, PROPELLER and SHROUD



The synergy between their technology and their aerodynamic design significantly boosts the performance of the 400-mm diameter petrol-driven, electric, and water-driven fans of the LEADER range.

Up to 20% greater flow rate, for unrivalled power in their category!

An operational advantage for the firefighter:

Set up compact, lightweight fans with outputs that were previously deliverable only by higher category fans.



VERIFIED PERFORMANCE

LEADER has its own test center with an instrumented "test house" including a dedicated room for measuring flow rates and pressures to standard AMCA 240-06.

To allow for the variability of real life situations, the test house incorporates multiple features allowing fans to be tested and compared.

This installation is indispensable to our R&D department for testing and developing innovations to LEADER fans and maximizing their performance. The test house also allows us to demonstrate to customers and partners the efficiency of our fans and the firefighting benefits of controlling ventilation.

CONTROL THE **AIR** AND YOU CONTROL THE **FIRE!**

ASSOCIATED VENTILATION TECHNIQUES:

POSITIVE PRESSURE VENTILATION (PPV)

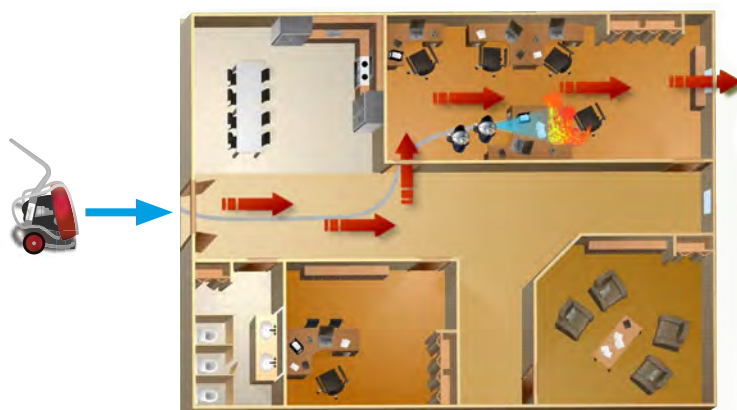
Blowing a large quantity of fresh air into a fire-affected space raises the internal pressure, allowing the smoke to be controlled.

The effects are rapidly obvious:

Increased visibility, lowered temperature, reduced toxicity, control of smoke movement, and reduced calorific potential.

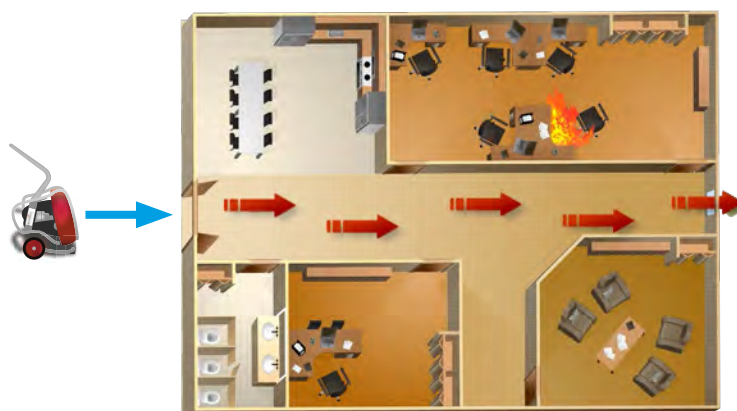
These effects are beneficial to responders and trapped persons alike.

Firefighters must decide which fan or fans will be best in a given situation, depending on the layout of the premises to be ventilated.



OFFENSIVE PPV TACTIC

The offensive tactic is direct ventilation of the volume in which the fire is developing, combined with fire extinguishing resources. This tactic aims to modify the behavior of the fire and quickly reduce its intensity.



DEFENSIVE PPV TACTIC

This defensive tactic protects particular areas. It prevents smoke and hot gases propagating to locations that are to be protected.

Only volumes not affected by fire are ventilated. This tactic employs ventilation dissociated from fire-extinguishing actions. It creates a logistical route with a slightly higher air pressure through which, for example, victims can be evacuated.

COMBINED VENTILATION TACTICS

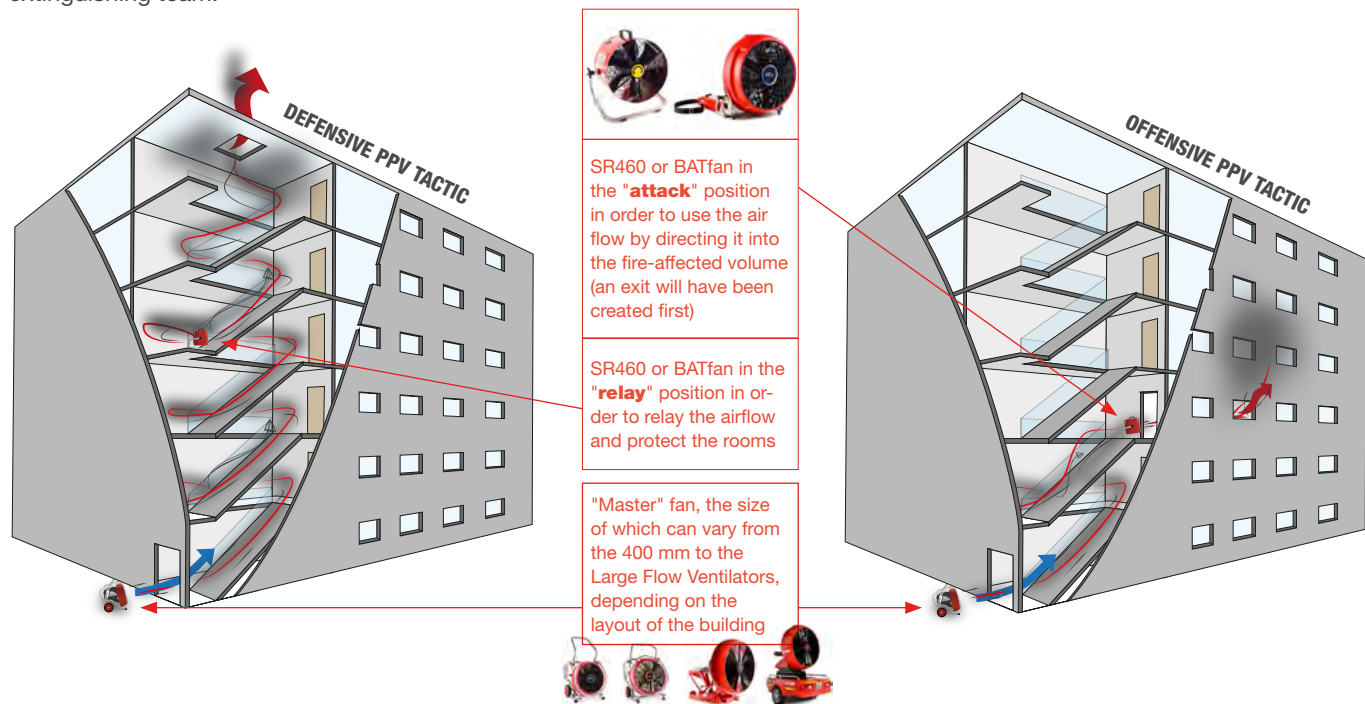
Also known as operational ventilation, **this combined tactic involves using both the preceding tactics on high-rise tower blocks:**

1/ Defensive ventilation is first deployed using a high-power "master" fan positioned at the foot of the building facing its entrance.

2/ With the stair well pressurized and thus made safe, the intervention team climbs up to the affected floor to set up a portable relay fan at the entrance of the burning volume.

3/ Once the exit is created, the offensive phase can begin:

The air flow from the master fan is relayed by the secondary fan, which is on the affected floor, and pushes the hot toxic smoke out of the building so that the combustible materials of the smoke cannot spread. Smoke control facilitates the work of the teams, especially the fire extinguishing team.



NEGATIVE PRESSURE VENTILATION (NPV)

This involves lowering the pressure inside the volume. The fan is placed inside the smoke-filled area and blows the smoke to the exterior. Simultaneously the crew create a fresh air inlet opening on the opposite side. A continuous stream of air then evacuates all smoke. NPV is used in a variety of situations, primarily where conditions and location do not favor natural ventilation or positive-pressure ventilation.

This method is particularly effective on fires in covered parking lots, underground tunnels/stations, basements, and cellars.

The ParkFan 80 was designed as an efficient, easy-to-implement solution for smoke removal from covered parking lots.

In their combination of performance and maneuverability, these fans remain unequalled.

A single crewmember can easily deploy 1 or 2 ParkFans inside the smoke-filled volume and direct the airstream and smoke out of the premises.

Accessories such as extraction ducts or suction/blow kits convert fans designed for PPV into extractors of smoke from confined spaces (cellars, basements etc.) or large volumes such as parking lots by using the Easy 4000 LFV fan and its extraction ducts.



LFVS: LARGE-FLOW VENTILATORS

MOBILE SOLUTION FOR VENTILATING LARGE VOLUMES

Large buildings continue to proliferate and are becoming ever larger. To meet these challenges, LEADER has designed large-flow ventilators to effectively fight very large fires in places such as: Warehouses, Tunnels, Airports, Industrial Complexes, High-Rise Tower Blocks, etc.



ASSURED RESULTS

Being totally independent of fixed fire-protection systems, these large-flow ventilator units are mobile and capable of mass ventilating enormous volumes.

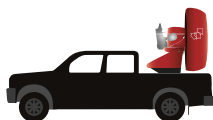
EASILY MANEUVERED BY ONE PERSON

LEADER trailer-mounted LFVs are easily maneuvered and positioned by one person.

Their combination of weight, power and maneuverability give these LFVs unequalled effectiveness.

ADAPTABLE TO VEHICLES OF ALL TYPES

Fans are available in trailer and skid versions for mounting on any mobile intervention unit.



Pick-up



Truck



Tracked vehicle



Rail-going platform



Elevator arm



Trolley



Trailer

CHOOSING THE RIGHT APPARATUS TO VENTILATE LARGE STRUCTURES

To meet the diverse needs of fire intervention or industrial applications, LEADER has developed large-flow ventilators:



	Easy 2000	Easy 4000
Throughput	Open air flow 150,000 m³/h	Open air flow 400,000 m³/h
Application	<p>One fan is an effective means of ventilating more modest large volumes such as industrial units, medium height/tall buildings, underground parking lots etc.</p> <p>Multiple fans offer flexibility of action since they can be used simultaneously to optimize blowing power.</p> <p>They can also be positioned at strategic points around a city or town.</p>	<p>For ventilating very large volumes tunnels, industrial buildings, very tall buildings, airport buildings, etc.</p>

VARIED VENTILATION APPLICATIONS REQUIRING LARGE BLOWING POWER



Road or rail tunnel ventilation

Sets up an air stream if the fixed ventilation system is defective, or boosts it if it is working, to expel smoke from the tunnel, refresh the volume, and intervene more efficiently.



Ventilation of airplanes and other aircraft

Valuable assistance when evacuating passengers. Quickly brings in fresh air and increases visibility in a restricted space where smoke can rapidly cut visibility to zero.



Airport ventilation

Airports contain many very large inter-connected halls and need the ability to remove harmful smoke rapidly to prevent it spreading and enable the rest of the airport to continue operating.



Ventilation of smoke-generating factories

Production stoppages can be very costly. Fixed smoke capture systems can be overwhelmed to the point where production grinds to a halt. An LFV is a mobile independent low-cost solution for occasional use, accelerating smoke removal times for industrial sites.



Ventilation of shopping centers

These very often consist of one large shop and connected shopping walkways. In such large spaces smoke can spread rapidly. It is important to be able to remove the smoke quickly, both to protect people and to safeguard merchandise.



Ventilation of covered parking lots

Extraction ducts allow LFV to remove smoke from underground parking lots.

VENTILATEUR MOBILE **ATEX**

FOR RISK-FREE USE IN **EXPLOSIVE ATMOSPHERES.**

To meet the need for mobile ventilation in at-risk industries, LEADER has designed special fans incorporating the most frequently requested features for use in explosive atmospheres to meet the requirements laid down in the ATEX Directive 94/9/EC and standard EN 14986-2007 specifically about fans.

There are no exceptions to the latter and a certificate must accompany every machine sold. The directive covers electrical and mechanical equipment designed to be used in potentially explosive atmospheres within the European Union and applies to all manufacturers worldwide.

THE ENTIRE APPARATUS MUST BE ATEX-CERTIFIED

An isolated component such as an ATEX-certified motor is not sufficient to obtain certification. LEADER fans are tested to the standards listed in the ATEX Directive.

Their certification covers the entirety of the unit - motor, frame, volute, grille, propeller, electronic module with its power supply cable, wheels, etc.



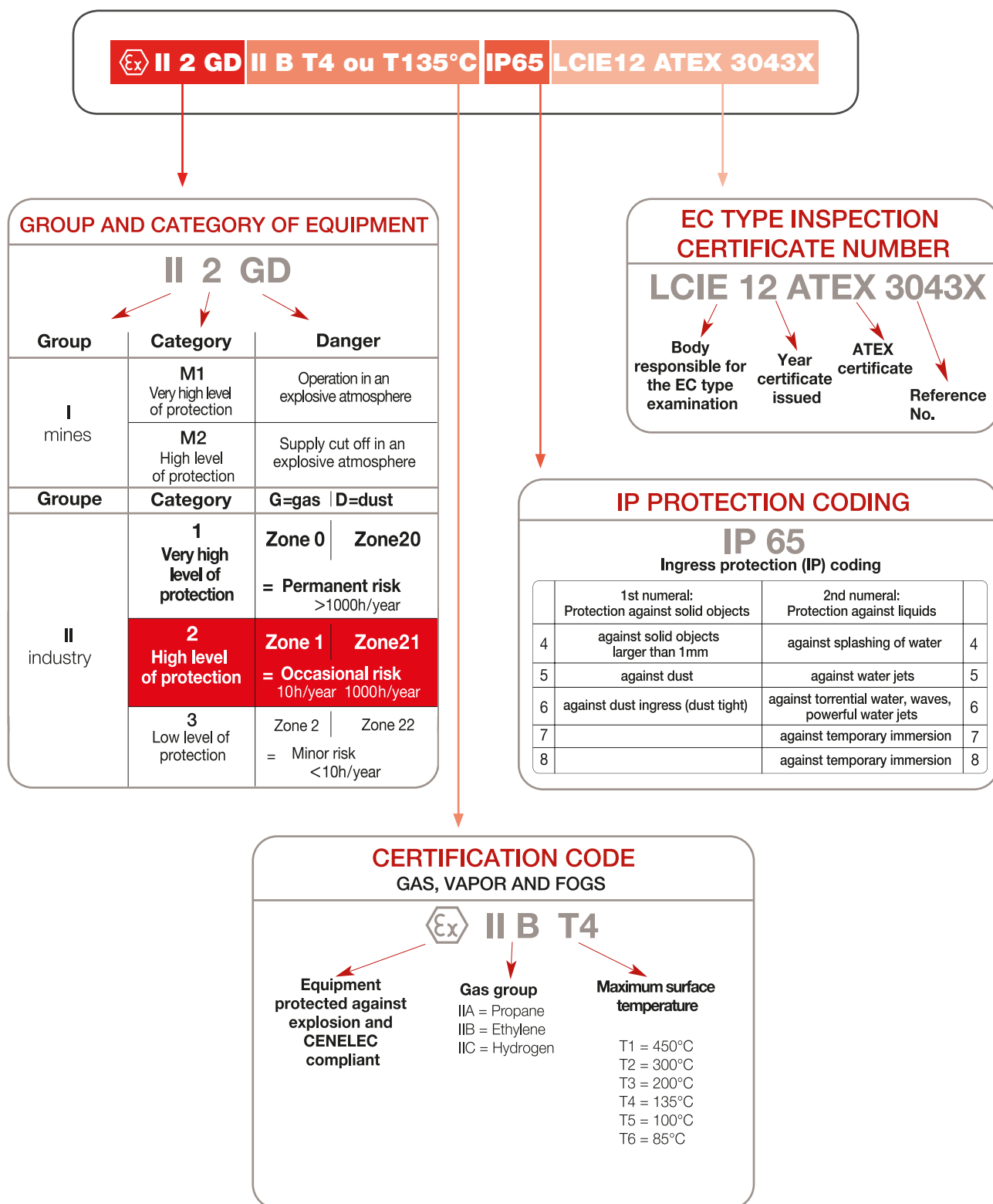
VARIOUS MOBILE FAN APPLICATIONS IN INDUSTRY

Pressurizing a volume to make it safe,
Expelling harmful smoke,
Cooling an overheating machine,
Removing smoke, explosive or toxic gases,
etc.

INTERPRETING THE ATEX CLASSIFICATION

The following information explains the ATEX classification, taking the ID plate of the ESX230 as an example.

So as not to limit your field of action in an explosive area, choose category 1- or 2-certified products.





RISKS IN CONFINED SPACES

Aside from general risks, confined space work exposes responders to three kinds of risk:

- ▶ asphyxiation
- ▶ poisoning
- ▶ fire and explosion

There are several processes that can reduce the oxygen concentration in a confined space: The oxygen is consumed, a blanket gas is introduced, or a gas of natural origin is evolved.

V-Box suction/blow kit



CLEANING THE AIR BY VENTILATION

It is possible to mitigate the causes of oxygen deficiency with ventilation techniques:

- ▶ by capture if the pollution source is localized - extracting bad air directly from close to its source,
- ▶ by dilution if the pollution source is diffuse: Prefer extraction if a small volume, blowing if a larger volume.

By blowing, whether directly or through blowing ducts, LEADER fans enable responders to:

- ▶ introduce new air
- ▶ cool a volume
- ▶ expel toxic gases or smoke from the structure
- ▶ pressurize a volume, thereby preventing the smoke or gases from spreading

By suction using dedicated accessories (ducts and extraction/blow kits), the LEADER range of electric fans can extract toxic gases or smoke where the blowing technique is not suitable.

TRAINING

LEADER SHARES ITS EXPERT VENTILATION EXPERIENCE



TAILOR-MADE TRAINING

LEADER regularly organises fire ventilation training courses around the world and at fire departments' request, where we teach the basics of the use of positive and negative pressure ventilation (PPV and NPV).

The different ventilation techniques are presented and practical sessions held to put the theory into practice.



Courses can be held:

- ▶ at LEADER's premises, with the advantage of being able to use the "test house", used by the R&D team on a daily basis to test our own fans,
- ▶ at the fire department's site,
- ▶ at a dedicated training site.



TEACHING SOFTWARE FOR FIRE VENTILATION TRAINING

LEADER has developed software consisting of interactive courses that can be freely downloaded from its website.

Created in partnership with the well-known fire training organisation EducExpert, these lessons are specially designed to be used by fire instructors in their task of passing on the skills of implementing ventilation techniques.

COMPLETE, EFFECTIVE LESSONS

Downloadable in 4 languages (French, English, Spanish and Chinese), these lessons introduce three main topics:

- ▶ The basics of three key firefighting ventilation techniques (offensive, defensive and combined ventilation),
- ▶ A review of the underlying principles of fire and the different phases of fire development,
- ▶ Thermal phenomena and their consequences.

BETTER ASSIMILATION OF KNOWLEDGE

Interactive lessons! Through the use of animations and clickable buttons, learners feel more engaged and therefore remember better.

OPTIMIZED LEARNING TIME

When used as part of the broader training of firefighters, it enables more efficient assimilation of knowledge.

ERGONOMIC

Quality, simplicity and user-friendliness are other advantages students appreciate.

TEST WHAT STUDENTS HAVE LEARNED

Each lesson unit includes a self-assessment section consisting of questionnaires and practical interactive exercises for rapid validation of what trainees have learned.





A RANGE OF **POWERFUL FANS:**



PETROL-DRIVEN FANS

Model	Outlet Ø in mm	Ventilation type	Application*	Motor**	Open air flow in m ³ /h	Flow rate according to AMCA 240-06 (m ³ /h)	Weight in kg	See details page
MT 215 L NEO	400	PPV	1	Honda GXH50 - 2.1 HP	28 800	Pending	20,3	p20
MT 225 NEO	400	PPV	1	Honda GX120 - 3.5 HP	37 700	Pending	26,8	p21
MT 236 NEO	400	PPV	1	Honda GX160 - 4.8 HP	51 650	Pending	40	p22
MT 240 NEO	400	PPV	1	Honda GX200 - 5.5 HP	56 150	Pending	42	p23
MT 245	550	PPV	1-2	Honda GX200 - 5.5 HP	51 200	Pending	52	p24
MT 280	550	PPV	1-2	Honda GX390 - 11.7 HP	85 200	Pending	69	p35
MT 296	550	PPV	1-2	B&S-Vanguard - 16 HP	96 000	Pending	73	p26
Easy 2000	885	PPV LfV	2-3	Honda GX630 - 20.8 HP	150 000	-	301	p48
Easy 4000	1200	PPV LfV	3	BMW - 115 HP	400 000	-	546	p50

ELECTRIC FANS

ON BATTERY

BAT FAN NEO	400	Relay and PPV	1	600 W (0.8 HP) - 110v / 220v –	24 050	Pending	23,5	p30
-------------	-----	---------------	---	--------------------------------	--------	---------	------	-----

DIRECT START

SA315	300	Extraction	1	DIRECT START	7 000	-	25,6	p40
SR460	300	Relay and PPV	1	1.1 kW (1.5 HP) - 220v - 50Hz	13 000	-	17	p32
ES 220 NEO	400	PPV	1	375 W (0.5 HP) - 110v / 220v –	31 200	Pending	25,9	p33
ES 230 NEO	400	PPV	1	50Hz / 60 Hz	40 750	Pending	39	p34
EDS 230 NEO	400	PPV	1	1.5 kW (2 HP) - 220v - 50Hz	28 750	Pending	33,1	p35
ES 245	550	PPV	1-2	2.2 kW (3 HP) - 220v - 50Hz	41 500	Pending	50,5	p37

WITH SOFT STARTER

ESP 230 NEO	400	PPV	1	15 / 20 amp - 115v – 60Hz	40 750	Pending	40	p34
ESP 280	550	PPV	1-2	2.2 kW (3 HP) - 220v - 50Hz	85 700	Pending	75	p38

WITH VARIABLE-SPEED DRIVE

ESV 230 NEO	400	PPV	1	2.2 kW (3 HP) - 220v - 50Hz / 60 Hz	40 750	Pending	44,5	p34
EVG230 NEO	400	PPV	1	1.1 kW (1.5 HP) – 15 / 20 amp – 115v – 60Hz	28 900	Pending	35,5	p35
ESV 245	550	PPV	1-2	2.2 kW (3 HP) - 220v - 50Hz / 60 Hz	41 500	Pending	53	p37
ESV 280	550	PPV	1-2	7.5 kW (10 HP) - 400V - 50Hz / 60Hz	85 700	Pending	81	p38
PARK FAN 80	550	NPV or PPV	1-2	7.5 kW (10 HP) - 400V - 50Hz / 60 Hz with wireless remote control	85 700	Pending	83	p39

ATEX

SAX320	300	Extraction	1	1.1 kW - 110v / 220v - 50Hz / 60Hz	9 000	Pending	38,3	p41
ESX 230	400	PPV	1	1.85 kW (2.5 HP) - 400v - 50Hz / 60Hz	30 000	Pending	57	p36

WATER-DRIVEN FANS

MH236 NEO	400	PPV	1	6.6 kW (9 HP)	49 050	Pending	32,6	p44
MH 260	400	PPV	2	6.6 kW (9 HP)	50 500	Pending	49	p45

*Application :

- 1 - Ventilation through single-leaf door, e.g. houses, small blocks of flats ...
- 2 - Ventilation through single/double doors, e.g. high-rise tower blocks, medium-size industrial units ...
- 3 - Ventilation through industrial unit door, underground parking lots, industrial sites, tunnels etc.

PPV = Positive Pressure Ventilation

NPV = Negative Pressure Ventilation

Relay = Relay fan in a combined ventilation set-up

LfV = Large-Flow Ventilator

**Electric motor = power in W measured on the shaft





Petrol-driven fans



Have the advantage of containing their own power source and have great blowing power.

LEADER offers a complete range of fans of different powers.



NEO
LEADER Fan
EASY POW'AIR
TECHNOLOGY

NEW!

PETROL-DRIVEN FAN **MT215 L**

Compact and lightweight: 20.3 kg!

A very **concentrated and ultra-powerful** jet of air due to an optimal combination of:

- ▶ A high-strength propeller matched to the power of the engine
- ▶ A red double-layer monobloc shroud made of reinforced high-density polyethylene
- ▶ A high-tech composite grille

Positioning from 0.90 m to 6 m in front of a door without loss of power for:

- ▶ more space to move about
- ▶ less noise inside the building

With folding pull/steer handle for easier set-up

Precise tilt adjustment

from -10° to +20° with indicator for optimization of direction of air stream up entrance steps or down into a semi-basement

Protective frame

with grey epoxy coating

Stable & easy to handle with large rear wheels

Compact for easy storage in vehicle trunks

Characteristics

Model	MT215 L NEO
Reference	I60.10.062N
Open air flow	28 800 m³/h
PPV air flow according to AMCA	Pending
Weight (dry)	20.3 kg
Dimensions L x H x D	530 x 495 x 555 mm
Propeller diameter	400 mm
Run time at full speed	1h40
Engine	HONDA GXH50 engine (4-stroke) 56% less CO than a 5 HP engine Assembly inspected and approved by Honda Motor Co., Ltd
Engine power	2.1 HP according to standard SAE J1349 of 2007
Noise level	84,5 dB à 3m
Ventilation type	PPV blowing
Application	Single door, e.g. house, small apartment block

Optional accessories:

High expansion foam adapter without coupling (products with coupling: see p. 52)	I60.20.105
Hour meter	I60.20.135
Adapter for connecting ventilation duct to fan	I60.20.149
5m ventilation duct	I60.20.147

Ventilation tactics in the catalogue or at www.leader-group.eu
Freely downloadable interactive ventilation courses at www.leadereducexpert.com
As part of our policy of constant research to improve our products, we reserve the right to modify our products' characteristics at any time without notice



NEO
LEADER Fan
EASY POW'AIR
TECHNOLOGY

NEW!

PETROL-DRIVEN FAN **MT225**

A very **concentrated and ultra-powerful** jet of air due to an optimal combination of:

- ▶ A high-strength propeller matched to the power of the engine
- ▶ A red double-layer monobloc shroud made of reinforced high-density polyethylene
- ▶ A high-tech composite grille

Positioning from 0.90 m to 6 m in front of a door without loss of power for:

- ▶ more space to move about
- ▶ less noise inside the building

Precise tilt adjustment

from -10° to +20° with indicator for optimization of direction of air stream up entrance steps or down into a semi-basement

Protective frame

with grey epoxy coating

Compact for easy storage in vehicle trunks

Characteristics

Model	MT225 NEO
Reference	I60.10.054N
Open air flow	37 700 m ³ /h
PPV air flow according to AMCA	Pending
Weight (dry)	26,8 kg
Dimensions L x H x D	550 x 568 x 436 mm
Propeller diameter	400 mm
Run time at full speed	1h40
Engine	HONDA GX 120 engine (4-stroke) Automatic engine cutout if oil runs out. Assembly inspected and approved by Honda Motor Co., Ltd
Engine power	3.5 HP according to standard SAE J1349 of 2007
Noise level	93.2 dB at 3 m (10')
Ventilation type	PPV blowing
Application	Single door, e.g. house, small apartment block

Optional accessories:

Mister without coupling (products with coupling: see p. 52)	Nous consulter
High expansion foam adapter without coupling (products with coupling: see p. 52)	I60.20.105
5m ventilation duct	I60.20.147
Adapter for connecting ventilation duct to fan	I60.20.149

Ventilation tactics in the catalogue or at www.leader-group.eu
Freely downloadable interactive ventilation courses at www.leadereducexpert.com
As part of our policy of constant research to improve our products, we reserve the right to modify our products' characteristics at any time without notice



NEO
LEADER Fan
EASY POW'AIR
TECHNOLOGY

NEW!

PETROL-DRIVEN FAN **MT236**

A very **concentrated and ultra-powerful** jet of air due to an optimal combination of:

- ▶ A high-strength propeller matched to the power of the engine
- ▶ A red double-layer monobloc shroud made of reinforced high-density polyethylene
- ▶ A high-tech composite grille

Positioning from 0.90 m to 6 m in front of a door without loss of power for:

- ▶ more space to move about
- ▶ less noise inside the building

Automatic optimal +10° tilt when handle raised

Precise tilt adjustment

from -10° to +20° with indicator for optimization of direction of air stream up entrance steps or down into a semi-basement

Protective frame

with grey epoxy coating

Stable & easy to handle with large rear wheels

Compact for easy storage in vehicle trunks

Characteristics

Model	MT236 NEO	
Reference	I60.10.052N	I60.10.053N
Open air flow	51 650 m3/h	
PPV air flow according to AMCA	Pending	
Weight (dry)	40 kg	
Dimensions L x H x D	550 x 550 x 490 mm	
Propeller diameter	400 mm	
Run time at full speed	2h10	
Engine	HONDA GX 160 engine (4-stroke) Automatic engine cutout if oil runs out. Assembly inspected and approved by Honda Motor Co., Ltd	
Engine power	4.8 HP according to standard SAE J1349 of 2007	
Noise level	91 dB at 3 m	
Ventilation type	PPV blowing	
Application	Single door, e.g. house, small apartment block	
-10° prop for negative tilt of fan	No	Yes

Optional accessories:

CO-reducing LEADER Cat catalytic converter	I60.20.142	Exhaust adapter	I60.20.014
Mister without coupling (products with coupling: see p. 52)	I60.20.104	Exhaust extension (length: 2.5m)	I60.20.012
High expansion foam adapter without coupling (products with coupling: see p. 52)	I60.20.105	Protective cover	I60.20.017
Hour meter	I60.20.135	-10° prop for negative tilt of fan	I60.20.130
5m ventilation duct	I60.20.101		

Ventilation tactics in the catalogue or at www.leader-group.eu
Freely downloadable interactive ventilation courses at www.leadereducexpert.com
As part of our policy of constant research to improve our products, we reserve the right to modify our products' characteristics at any time without notice





NEO
LEADER Fan
EASY POW'AIR
TECHNOLOGY

PETROL-DRIVEN FAN MT240

A very **concentrated and ultra-powerful** jet of air due to an optimal combination of:

- ▶ A high-strength propeller matched to the power of the engine
- ▶ A red double-layer monobloc shroud made of reinforced high-density polyethylene
- ▶ A high-tech composite grille

Positioning from 0.90 m to 6 m in front of a door without loss of power for:

- ▶ more space to move about
- ▶ less noise inside the building

Automatic optimal +10° tilt when handle raised

Precise tilt adjustment

from -10° to +20° with indicator for optimization of direction of air stream up entrance steps or down into a semi-basement

Protective frame

with grey epoxy coating

Stable & easy to handle with large rear wheels

Compact for easy storage in vehicle trunks

Integrated stabilizer prop

at rear. Also enables fan to be tilted to -10° for downward ventilation.

Characteristics

Model	MT240 NEO
Reference	I60.10.061N
Open air flow	56 150 m³/h
PPV air flow according to AMCA	Pending
Weight (dry)	42 kg
Dimensions L x H x P	550 x 550 x 490 mm
Propeller diameter	400 mm
Run time at full speed	1h30
Engine	Engine HONDA GX 200 (4-stroke) Automatic engine cutout if oil runs out. Assembly inspected and approved by Honda Motor Co., Ltd
Engine power	5.5 HP according to standard SAE J1349 of 2007
Noise level	90.5 dB at 3 m (10')
Ventilation type	PPV blowing
Application	Single door, e.g. house, small apartment block

Optional accessories:

CO-reducing LEADER Cat catalytic converter	I60.20.142	Exhaust adapter	I60.20.014
Mister without coupling (products with coupling: see p. 52)	I60.20.104	Exhaust extension (length: 2.5m)	I60.20.012
High expansion foam adapter without coupling (products with coupling: see p. 52)	I60.20.105	Protective cover	I60.20.017
Hour meter	I60.20.135	5m ventilation duct	I60.20.101



LEADER Fan
EASY POW'AIR
TECHNOLOGY

PETROL-DRIVEN FAN MT245

A concentrated, powerful jet of air due to:

- ▶ high-strength propeller matched to the power of the motor
- ▶ double-layer aluminum/ABS thermoplastic red shroud
- ▶ metal grille

Positioning from 0.90 m to 6 m in front of a door without loss of power for:

- ▶ more space to move about
- ▶ less noise inside the building

Automatic optimal +10° tilt when handle raised

Precise tilt adjustment

from -10° to +20° with indicator for optimization of direction of air stream up entrance steps or down into a semi-basement

Protective frame

with grey epoxy coating

Stable & easy to handle with large rear wheels

Characteristics

Model	MT245
Reference	I60.10.051
Open air flow	51 200 m ³ /h
PPV air flow according to AMCA	Pending
Weight (dry)	52 kg
Dimensions L x H x P	720 x 720 x 620 mm
Propeller diameter	550 mm
Run time at full speed	2h00
Engine	HONDA GX 200 (4-stroke) Automatic engine cutout if oil runs out. Assembly inspected and approved by Honda Motor Co., Ltd
Engine power	5.5 HP according to standard SAE J1349 of 2007
Noise level	96 dB at 3 m
Ventilation type	PPV blowing
Application	Single door (e.g. house, small apartment block) and double door (e.g. tall apartment block, mid-size industrial unit)

Optional accessories:

CO-reducing LEADER Cat catalytic converter	I60.20.142	Exhaust adapter	I60.20.014
Mister without coupling (products with coupling: see p. 52)	I60.20.104	Exhaust extension (length: 2.5m)	I60.20.012
High expansion foam adapter without coupling (products with coupling: see p. 52)	I60.20.116	Protective cover	I60.20.097
Hour meter	I60.20.135	-10° prop for negative tilt of fan	I60.20.108
5m ventilation duct	I60.20.113		



LEADER Fan
EASY POW'AIR
TECHNOLOGY

PETROL-DRIVEN FAN MT280

A concentrated, powerful jet of air due to:

- ▶ high-strength propeller matched to the power of the motor
- ▶ double-layer aluminum/ABS thermoplastic red shroud
- ▶ metal grille

Positioning from 0.90 m to 6 m in front of a door without loss of power for:

- ▶ more space to move about
- ▶ less noise inside the building

Automatic optimal +10° tilt when handle raised

Precise tilt adjustment

from -10° to +20° with indicator for optimization of direction of air stream up entrance steps or down into a semi-basement

Protective frame

with grey epoxy coating

Stable & easy to handle with large rear wheels

Characteristics

Model	MT280
Reference	I60.10.048
Open air flow	85 200 m ³ /h
PPV air flow according to AMCA	Pending
Weight (dry)	69 kg
Dimensions L x H x P	720 x 780 x 620 mm
Propeller diameter	550 mm
Run time at full speed	1h20
Engine	HONDA GX 390 (4-stroke) Automatic engine cutout if oil runs out. Assembly inspected and approved by Honda Motor Co., Ltd
Engine power	11.7 HP according to standard SAE J1349 of 2007
Noise level	99 dB at 3 m (10')
Ventilation type	PPV blowing
Application	Single door (e.g. house, small apartment block) and double door (e.g. tall apartment block, mid-size industrial unit)

Optional accessories:

Mister without coupling (products with coupling: see p. 52)	I60.20.104	Exhaust adapter (products with coupling: see p. 52)	I60.20.125
High expansion foam adapter without coupling (products with coupling: see p. 52)	I60.20.116	Exhaust extension (length: 2.5m)	I60.20.012
Hour meter	I60.20.135	Protective cover	I60.20.097
5m ventilation duct	I60.20.113	-10° prop for negative tilt of fan	I60.20.108





LEADER Fan
EASY POW'AIR
TECHNOLOGY

PETROL-DRIVEN FAN MT296

A concentrated, powerful jet of air due to:

- ▶ high-strength propeller matched to the power of the motor
- ▶ double-layer aluminum/ABS thermoplastic red shroud
- ▶ metal grille

Positioning from 0.90 m to 6 m in front of a door without loss of power for:

- ▶ more space to move about
- ▶ less noise inside the building

Automatic optimal +10° tilt when handle raised

Precise tilt adjustment

from -10° to +20° with indicator for optimization of direction of air stream up entrance steps or down into a semi-basement

Protective frame

with grey epoxy coating

Stable & easy to handle with large rear wheels

Characteristics

Model	MT296
Reference	I60.10.045
Open air flow	96 000 m ³ /h
PPV air flow according to AMCA	Pending
Weight (dry)	73 kg
Dimensions L x H x P	720 x 780 x 620 mm
Propeller diameter	550 mm
Run time at full speed	1h50
Engine	B&S Vanguard two-cylinder engine (4-stroke)
Engine power	16 HP according to standard SAE J1349 of 2007
Noise level	98.3 dB at 3 m (10')
Ventilation type	PPV blowing
Application	Single door (e.g. house, small apartment block) and double door (e.g. high rise buildings, mid-size industrial unit)

Optional accessories:

5m ventilation duct	I60.20.113	Exhaust extension (length: 2.5m)	I60.20.012
Mister without coupling (products with coupling: see p. 52)	I60.20.111	Protective cover	I60.20.097
High expansion foam adapter without coupling (products with coupling: see p. 52)	I60.20.116	-10° prop for negative tilt of fan	I60.20.108
Hour meter	I60.20.135		

Ventilation tactics in the catalogue or at www.leader-group.eu
Freely downloadable interactive ventilation courses at www.leadereducexpert.com
As part of our policy of constant research to improve our products, we reserve the right to modify our products' characteristics at any time without notice







Electric fans



They have the advantage of not producing any toxic fumes and are quieter than petrol-driven engines. However, they need a power supply which must be allowed for ahead of time based on their power and the number of fans deployed.

LEADER offers a complete range of electric fans of different powers with or without variable speed drive and suitable for differing electricity supplies (110/220 V, 50/60 Hz, GFCI (RCD), soft starter, etc.).



NEO
LEADER Fan
EASY POW'AIR
TECHNOLOGY



NEW!

ELECTRIC FAN **BATfan**

Portable battery-mounted fan

Powerful and lightweight for completely self-contained operation!

2 versions to choose from:

- ▶ BATfan 20 with a 20-minute runtime and total weight of 23.5 kg
- ▶ BATfan 45 with a 45-minute runtime and total weight of 27.5 kg

Totally self-contained

- ▶ No cables: Avoids further accidents
- ▶ No need for a generator or power socket

Compact & mobile

- ▶ Folds up and stows easily in the trunk of a vehicle: 2 BATfans occupy the space of one conventional fan!
- ▶ Portable by one person alone
- ▶ Carrying handle and strap
- ▶ Folding trolley for even easier transport (optional)

Quicker to set up than conventional fans

- ▶ No time wasted searching for a power socket: Starts off instantly
- ▶ Easy set-up

Powerful concentrated jet of air with optimal combination of:

- ▶ propeller specifically matched to the motor power
- ▶ reinforced double-layer monobloc shroud
- ▶ high-tech composite grille

Positioning from 0.90 m to 6 m in front of a door

Dual power source means greater flexibility:

Runs on battery or mains electricity if necessary (battery will automatically recharge at same time)

Practical

- ▶ Tilt is adjustable from -10° to +30° due to locking system with angle indicator
- ▶ Integrated variable-speed drive
- ▶ Powered by NiMH battery
 - Can recharge while in use
 - Low maintenance: only 1 recharge every 6 months
 - No restrictions on air transport
 - Battery charge indicator



Ventilation tactics in the catalogue or at www.leader-group.eu
Freely downloadable interactive ventilation courses at www.leadereducexpert.com
As part of our policy of constant research to improve our products, we reserve the right to modify our products' characteristics at any time without notice

Electric fan

- ▶ No exhaust gases
- ▶ Noise level lower than a petrol-driven engine

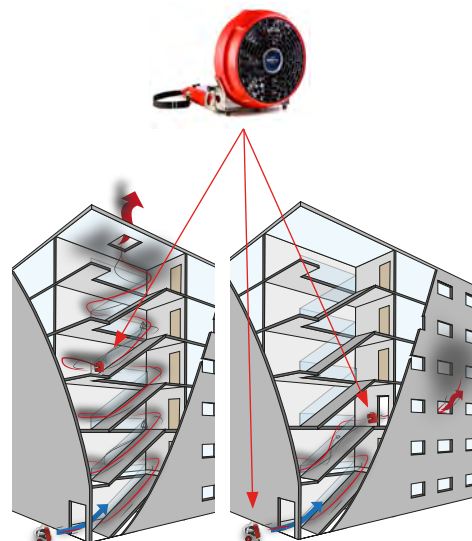
Multi-use, can be used:

- ▶ indoors or outdoors: protected against splashing water (IP55)
- ▶ on its own at a building entrance for PPV
- ▶ for PPV combined tactics with other fans:
 - as a relay in a corridor or stairwell
 - for attack in front of an apartment door for offensive ventilation
- ▶ in blowing mode with duct (optional)
- ▶ as a foam generator with adapter (optional)

Two BATfans together for even more flexibility

Taking up no more space than one standard fan, two BATfans give greater operational flexibility:

- ▶ at the building entrance for PPV tactic for more air flow
- ▶ for combined PPV tactic: one at the entrance, the other as relay or attack on a higher floor of a building
- ▶ for NPV tactic to accelerate smoke removal



Characteristics

Model	BATfan 20	BATfan 45
References 110V	I63.12.001N	I63.12.004N
References 220V	I63.12.002N	I63.12.003N
Open air flow	24 050 m ³ /h	
PPV air flow according to AMCA	Pending	
Weight	23.5 kg	27.5 kg
Dimensions L x H x P	550 x 525 x 275 mm	
Propeller diameter	400 mm	
Run time at full speed	20 min	45 min
Engine	600 W with variable speed drive – IP55	
Power supply	Self-contained: NiMH battery On mains: single-phase 110V - 50/60 Hz or 220V - 50/60 Hz	
Power consumption in steady operation	8A when plugged into 110V 4A when plugged into 220V	
Electric power plug	CE-220V male plug or US-110V male plug	
Charging time	100% in 5 h	100% in 10 h
	Recommendation: one recharge needed only once every 6 months	
Use temperature	Use -20°C to +50°C Permanent storage -20°C to +35°C 1 week storage -20°C to +60°C Charging -5°C to +45°C	
Protection	IP55 = protected from water spray in all directions from fire hose	
Noise level	91 dB at 3 m	
Ventilation type	PPV, combined PPV, and NPV*	
Application	PSingle door – houses, small apartment blocks or as a relay fan on upstairs floors or in attack use in front of an apartment door	

*For Negative Pressure Ventilation (extraction) in cold smoke only.

Optional accessories

High expansion foam adapter without coupling (products with coupling: see p. 52)	I60.20.105
Adapter for connecting ventilation duct to fan	I60.20.149
5m ventilation duct	I60.20.147
Folding transport trolley	I63.12.005
100m extension in bag with lockable plugs - weight 12kg - high-flex cable 3x1.5 mm ²	I63.00.016



ELECTRIC FAN SR460

Auxiliary Relay Fan (ARF)

Lightweight and quiet.

Allows responders to work in complete safety close to the fire, reduce the temperature, and remove hot gases and smoke through vents (windows, etc.).

It is positioned on an upstairs floor as a relay for a more powerful fan positioned at the building entrance (see combined ventilation concept)

Robust protective sheet-steel housing - red epoxy paint

High-strength propeller matched to the power of the motor

Transportable by one operator due to its low weight and small size (with carry handle)

Adjustable tilt angle to optimize the direction of the air stream

Compact, stows easily in the trunk of a vehicle.

Characteristics

Model	SR460
Reference	I63.00.015
Open air flow	13 000 m3/h
PPV air flow according to AMCA	Pending
Weight	17 kg
Dimensions L x H x P	566 x 547 x 422 mm
Propeller diameter	400 mm
Engine	370 W IP55 protection
Power supply	Monophasé - 230V - 50/60Hz - IP55
Power consumption in steady operation	2.75 A
Mains plug	CE male plug - 220 V
Noise level	65.5 dB at 3 m (10')
Ventilation type	Combined PPV
Application	As a relay fan on upstairs floors or for attack in front of an apartment door

Optional accessories :

100m extension in bag with lockable plugs - weight 12kg - high-flex cable 3x1.5 mm²	I63.00.016
---	------------



NEO
LEADER Fan
EASY POW'AIR
TECHNOLOGY

NEW!

ELECTRIC FAN ES220

A very **concentrated and ultra-powerful** jet of air due to an optimal combination of:

- ▶ A high-strength propeller matched to the power of the engine
- ▶ A red double-layer monobloc shroud made of reinforced high-density polyethylene
- ▶ A high-tech composite grille

Positioning from 0.90 m to 6 m in front of a door without loss of power for:

- ▶ more space to move about
- ▶ less noise inside the building

Precise tilt adjustment from -10° to +20° with indicator to optimize direction of air stream up entrance steps or down into a semi-basement

Protective frame with gray epoxy coating

Compact for easy storage in vehicle trunks

Characteristics

Model	ES220 NEO
Reference	I63.10.039N
Open air flow	31 200 m ³ /h
PPV air flow according to AMCA	Pending
Weight	25,9 kg
Dimensions L x H x P	550 x 568 x 436 mm
Propeller diameter	400 mm
Engine	1.5 kW
Voltage/frequency	220V – 50Hz
Mains plug	CE male plug – 220 V
Noise level	91 dB at 3 m (10')
Ventilation type	PPV blowing
Application	Single door, e.g. house, small apartment block

Optional accessories :

Adapter for connecting ventilation duct to fan	I60.20.149
5m ventilation duct	I60.20.147
High expansion foam adapter without coupling (products with coupling: see p. 52)	I60.20.105
V-BOX cube for extractor/blower kit	I63.20.017
5m diam. duct 400mm for V-Box extractor/blower kit	I63.20.014

Ventilation tactics in the catalogue or at www.leader-group.eu
Freely downloadable interactive ventilation courses at www.leadereducexpert.com
As part of our policy of constant research to improve our products, we reserve the right to modify our products' characteristics at any time without notice





NEO
LEADER Fan
EASY POW'AIR
TECHNOLOGY

NEW!

ELECTRIC FAN **ES230 - ESP230 - ESV230**

A very **concentrated and ultra-powerful** jet of air due to an optimal combination of:

- ▶ A high-strength propeller matched to the power of the engine
- ▶ A red double-layer monobloc shroud made of reinforced high-density polyethylene
- ▶ A high-tech composite grille

Positioning from 0.90 m to 6 m in front of a door without loss of power for:

- ▶ more space to move about
- ▶ less noise inside the building

Automatic optimal +10° tilt when handle raised

Precise tilt adjustment

from -10° to +20° with indicator for optimization of direction of air stream up entrance steps or down into a semi-basement

Protective frame

with grey epoxy coating

Stable & easy to handle with large rear wheels

Compact for easy storage in vehicle trunks

Characteristics

Model 220 V	ES230 NEO	ESP230 NEO	ESV230 NEO
Reference	I63.10.010N	I63.10.012N	I63.10.011N
Open air flow	40 750 m³/h		
PPV air flow according to AMCA	Pending		
Weight	39 kg	40 kg	41 kg
Dimensions L x H x P	550 x 550 x 490 mm		
Propeller diameter	400 mm		
Engine	2.2 kW – IP55	2.2 kW with soft starter – IP55	2.2 kW with variable speed drive – IP55
Power supply	Single phase - 230V – 50Hz		Single phase - 230V 50/60Hz – IP55
Power consumption in steady operation	12,5 A	14 A	16,5 A
Mains plug	CE male plug – 220 V		
Noise level	83.6 dB at 3 m (10')		
Ventilation type	Blowing – VPP		
Application	Single door – houses, small apartment blocks		

Optional accessories:

Mister without coupling (products with coupling: see p. 52)	I60.20.104	Prop for -10° tilt, useful for ventilating semi-basements	I60.20.130
High expansion foam adapter without coupling (products with coupling: see p. 52)	I60.20.105	5m diam. duct 400mm for V-BOX extractor/blower kit	I63.20.014
5m ventilation duct	I60.20.101	V-BOX cube for extractor/blower kit	I63.20.017
Protective cover	I60.20.017		

Ventilation tactics in the catalogue or at www.leader-group.eu
Freely downloadable interactive ventilation courses at www.leadereducexpert.com
As part of our policy of constant research to improve our products, we reserve the right to modify our products' characteristics at any time without notice



NEO
LEADER Fan
EASY POW'AIR
TECHNOLOGY

NEW!

ELECTRIC FAN EDS230 - EDS230.2 - EVG230

A very **concentrated and ultra-powerful** jet of air due to an optimal combination of:

- ▶ A high-strength propeller matched to the power of the engine
- ▶ A red double-layer monobloc shroud made of reinforced high-density polyethylene
- ▶ A high-tech composite grille

Positioning from 0.90 m to 6 m in front of a door without loss of power for:

- ▶ more space to move about
- ▶ less noise inside the building

Automatic optimal +10° tilt when handle raised

Characteristics

Model 110 V	EDS230 NEO	EDS230.2 NEO	EVG230 NEO
Reference	I63.10.032N	I63.10.033N	I63.10.042N
Open air flow	28 750 m3/h	32 400 m3/h	28 900 m3/h
PPV air flow according to AMCA	Pending		
Weight	33.1kg	37kg	35.5kg
Dimensions L x H x P	550 x 550 x 490 mm		
Propeller diameter	400 mm		
Engine	1.1 kW GFCI compatible – IP55	1.5 kW GFCI compatible – IP55	1.1 kW with variable speed drive GFCI compatible – IP55
	Runs on 15 A circuit breaker and compatible with GFCI circuit breaker		Runs on 20 A circuit breaker and compatible with GFCI circuit breaker
Power supply	Single phase - 115V±10% – 60Hz		Single phase - 115V±10% 50/60Hz
Power consumption in steady operation	13.2 A	18.7 A	13.9 A
Mains plug	US male plug – 110 V		
Noise level	83.6 dB à 3m	84.7 dB à 3m	83.6 dB à 3m
Ventilation type	Blowing – VPP		
Application	Single door – houses, small apartment blocks		

Optional accessories:

High expansion foam adapter without coupling (products with coupling: see p. 52)	I60.20.105	Prop for -10° tilt, useful for ventilating semi-basements	I60.20.130
5m ventilation duct	I60.20.101	5m diam. duct 400mm for V-BOX extractor/blower kit	I63.20.014
Protective cover	I60.20.017	V-BOX cube for extractor/blower kit	I63.20.017

Ventilation tactics in the catalogue or at www.leader-group.eu
Freely downloadable interactive ventilation courses at www.leadereducexpert.com
As part of our policy of constant research to improve our products, we reserve the right to modify our products' characteristics at any time without notice



LEADER Fan
EASY POW'AIR
TECHNOLOGY



ELECTRIC FAN ESX230 - ATEX certified

Usable in an explosive atmosphere

ATEX certification: II 2 GD II B T4 ou T135°C suivant LCIE 12 ATEX 3043 X

A concentrated, powerful jet of air due to:

- ▶ high-strength propeller matched to the power of the motor
- ▶ double-layer aluminum/ABS thermoplastic red shroud
- ▶ metal grille

Positioning from 0.90 m to 6 m in front of a door without loss of power for:

- ▶ more space to move about
- ▶ less noise inside the building

Automatic optimal +10° tilt when handle raised

Precise tilt adjustment

from -10° to +20° to optimize direction of air stream up entrance steps

Protective frame

with grey epoxy coating

Stable & easy to handle even on unstable ground due to large rear wheels

Compact for easy storage in vehicle trunks

Integrated misting system

Characteristics

Model	ESX230
Reference	I63.11.006
Open air flow	▶ 30 000 m ³ /h on 50Hz ▶ 36 000 m ³ /h on 60Hz
PPV air flow according to AMCA	Pending
Weight	57 kg
Dimensions L x H x P	550 x 550 x 490 mm
Propeller diameter	400 mm
Engine	1.85 kW – IP65
Power supply	3-phase – 230/400V – 50/60Hz
Consummation	3.1A (in steady operation) and 30A (starting current)
Mains plug	Not supplied
Brumisateur intégré	1" BSP F inlet
Noise level	83.6 dB at 3 m (10')
Ventilation type	Blowing - PPV in explosive atmosphere
Application	Single door – houses, small apartment blocks, confined spaces, etc.

Optional accessories:

High expansion foam adapter without coupling (products with coupling: see p. 52)	I60.20.105
5m ATEX duct	I60.20.099



LEADER Fan
EASY POW'AIR
TECHNOLOGY

ELECTRIC FAN ES245 - ESV245

A **concentrated, powerful** jet of air due to:

- ▶ high-strength propeller matched to the power of the motor
- ▶ double-layer aluminum/ABS thermoplastic red shroud
- ▶ metal grille

Positioning from 0.90 m to 6 m in front of a door without loss of power for:

- ▶ more space to move about
- ▶ less noise inside the building

Automatic optimal +10° tilt when handle raised

Precise tilt adjustment

from -10° to +20° to optimize direction of air stream up entrance steps

Protective frame

with grey epoxy coating

Stable & easy to handle even on unstable ground due to large rear wheels

Characteristics

Model	ES245	ESV245
Reference	I63.10.017	I63.10.015
Open air flow	41 500 m ³ /h	
PPV air flow according to AMCA	Pending	
Weight	50.5 kg	53 kg
Dimensions L x H x P	720 x 720 x 620 mm	
Propeller diameter	550mm	
Engine	2,2 kW – IP55	2,2 kW with variable speed drive – IP55
Power supply	220V 50Hz single-phase	
Engine consumption	17 A	
Mains plug	CE male plug	
Noise level	88,7 dB at 3 m (10')	
Ventilation type	PPV blowing	
Application	Single door (e.g. houses, small apartment blocks) and double doors (e.g. high-rise tower blocks, mid-size industrial units)	

Optional accessories:

Mister without coupling (products with coupling: see p. 52)	I60.20.104	Protective cover	I60.20.097
High expansion foam adapter without coupling (products with coupling: see p. 52)	I60.20.116	-10° prop for negative tilt of fan	I60.20.108
5m ventilation duct	I60.20.113		





LEADER Fan
EASY POW'AIR
TECHNOLOGY

ELECTRIC FAN ESP280 - ESV280

A concentrated, powerful jet of air due to:

- ▶ high-strength propeller matched to the power of the motor
- ▶ double-layer aluminum/ABS thermoplastic red shroud
- ▶ metal grille

Positioning from 0.90 m to 6 m in front of a door without loss of power for:

- ▶ more space to move about
- ▶ less noise inside the building

Automatic optimal +10° tilt when handle raised

Precise tilt adjustment
from -10° to +20° to optimize direction of air stream up entrance steps

Protective frame
with grey epoxy coating

Stable & easy to handle even on unstable ground due to large rear wheels

Characteristics

Model	ESP280	ESV280
Reference	I63.10.037	I63.10.038
Open air flow	85 700 m ³ /h	
PPV air flow according to AMCA	Pending	
Weight	75 kg	81 kg
Dimensions L x H x P	720 x 720 x 670 mm	
Propeller diameter	550mm	
Engine	7.5KW with soft starter IP55	7.5KW with variable speed drive* IP65
Power supply	400V 50Hz three-phase	400V 50/60 Hz three-phase
Engine consumption	15.5A	16A
Mains plug	CE male plug – 400 V 32Amp IP67	
Noise level	96.3 dB at 3 m (10')	
Ventilation type	PPV blowing	
Application	Single door (e.g. houses, small apartment blocks) and double doors (e.g. high-rise tower blocks, mid-size industrial units)	

*If used on an electricity generator, generator must be fitted with a Type B GFCI

Optional accessories:

5m ventilation duct	I60.20.113	Protective cover	I60.20.108
High expansion foam adapter without coupling (products with coupling: see p. 52)	I60.20.116	-10° prop for negative tilt of fan	I60.20.097



LEADER Fan
EASY POW'AIR
TECHNOLOGY

KEY POINTS

Designed for **rapid smoke removal from underground parking lots**. The ParkFan is placed within the smoke-filled volume to blow the smoke out.

Can be controlled from outside the smoke-filled area with a wireless remote control.



ELECTRIC FAN ParkFan 80

A concentrated, powerful jet of air due to:

- ▶ high-strength propeller matched to the power of the motor
- ▶ double-layer aluminum/ABS thermoplastic red shroud
- ▶ metal grille

Positioning from 0.90 m to 6 m in front of a door without loss of power for:

- ▶ more space to move about
- ▶ less noise inside the building

Automatic optimal +10° tilt when handle raised

Precise tilt adjustment

from -10° to +20° to optimize direction of air stream up entrance steps

Protective frame

with grey epoxy coating

Stable & easy to handle even on unstable ground due to large rear wheels

Integrated misting system

Characteristics

Model	ParkFan 80
Reference	I63.10.045
Open air flow	85 700 m ³ /h
PPV air flow according to AMCA	Pending
Weight	83 kg
Dimensions L x H x P	720 x 720 x 680 mm
Propeller diameter	550mm
Engine	7.5KW with variable speed drive IP65*
Power supply	400V 50/60 Hz three-phase
Engine consumption	16A
Mains plug	CE male plug – 400 V 32Amp IP67
Feature	Integrated 2.4 GHz radio remote control for ON/OFF control and speed variation. Range 30m
Integrated mister	1" BSP female inlet
Noise level	96.3 dB at 3 m (10')
Ventilation type	NPV extraction and PPV blowing
Application	Single door (e.g. houses, small apartment blocks) *If used on an electricity generator, generator must be fitted with a type B or C

Optional accessories:

5m ventilation duct	I60.20.113	-10° prop for negative tilt of fan	I60.20.108
High expansion foam adapter without coupling (products with coupling: see p. 52)	I60.20.116		





ELECTRIC FAN SA 315

Extractor/Blower electric fan

For safe removal of dangerous gases:

- Ventilation by blowing or extraction
- With 300mm diam. ZAG couplings for connection to suction and blowing ducts
- Stainless steel body.

Compact, stows easily in the trunk of a vehicle.

Portable, easy to handle, stable and robust

Characteristics

Model	SA315
Reference	I63.00.022
Nominal air flow	2 500 m3/h
Air flow in extraction	2,980 m3/h (105,000 cu ft/h) 2400 m3/h (85,000 cu ft/h) with 5m (16' 5") duct
Weight	25,6 kg
Dimensions L x H x P	374 x 435 x 460 mm
Diamètre grille de sortie	300mm
Engine	1.1 kW IP55 protection
Power supply	Single phase - 230V – 50Hz
Power consumption in steady operation	6.1 A
Mains plug	CE male plug – 220 V
Ventilation type	Blowing and Suction
Application	Smoke or gas removal from premises. Smoke removal from basements and ships

Optional accessories:

Extraction/blowing duct for SA315. Ø 300 mm - L 5m

I61.20.002





ELECTRIC FAN **SAX320 Certifié ATEX**

Extractor/Blower electric fan

Usable in an explosive atmosphere

ATEX certification: II 2 G II B T₄ according to LCIE 13 ATEX 3085 X

For safe removal of dangerous gases:

- ▶ Ventilation by blowing or suction
- ▶ With 300mm diam. ZAG couplings for connection to suction and delivery ducts
- ▶ Stainless steel body.

Compact, stows easily in the trunk of a vehicle.

Portable, easy to handle, stable and robust

Characteristics

Model	SAX320	SAX320 MN	SAX320 MNT
Reference	I63.00.006	I63.00.007	I63.00.012
Nominal air flow	2 500 m³/h	3 070 m³/h	2 560 m³/h on 50Hz 3 070 m³/h on 60Hz
Air flow in extraction	3150 m ³ /h	3800 m ³ /h	3150-3800 m ³ /h
Weight	38,3 kg		
Dimensions L x H x P	374 x 570 x 520 mm		
Diamètre grille de sortie	300mm		
Engine	1.1 kW Protection IP55 – ATEX: II 2 G II B T ₄ (Other motor: consult us)		
Power supply	Single-phase - 230V 50-60Hz	Three-phase - 115V 60Hz	Single-phase - 230V 50/60Hz Tropicalized
Power consumption in steady operation	4,5 A	8 A	4,5 A
Mains plug	Not supplied		
Ventilation type	Blowing and Suction		
Application	Dilution of explosive atmosphere. Chemical vapor removal by extraction. Tank degassing.		

Optional accessories:

Antistatic PVC extraction/blowing duct for SAX320. Ø 300 mm - L 5m

I61.20.011







Water-driven fans



These must be connected to a pump to operate. They are used for special situations or in the context of particular working modes where electric or petrol-driven fans cannot be used.



NEO
LEADER Fan
EASY POW'AIR
TECHNOLOGY

NEW!

PETROL-DRIVEN FAN MH236

A very **concentrated and ultra-powerful** jet of air due to an optimal combination of:

- ▶ A high-strength propeller matched to the power of the engine
- ▶ A red double-layer monobloc shroud made of reinforced high-density polyethylene
- ▶ A high-tech composite grille

Positioning from 0.90 m to 6 m in front of a door without loss of power for:

- ▶ more space to move about
- ▶ less noise inside the building

Automatic optimal +10° tilt when handle raised

Precise tilt adjustment

from -10° to +20° with indicator for optimization of direction of air stream up entrance steps or down into a semi-basement

Protective frame

with grey epoxy coating

Stable & easy to handle even on unstable ground due to large rear wheels

Compact for easy storage in vehicle trunks

Integrated misting system

Characteristics

Model	MH236 NEO
Reference	I60.00.032N
Open air flow	40 300 m ³ /h
PPV air flow according to AMCA	Pending
Weight (dry)	32.6 kg
Dimensions L x H x P	550 x 550 x 490 mm
Propeller diameter	410 mm
Engine	Water-driven motor in aluminum with DSP 65 coupling, cutoff and control valve, and pressure gage
Engine power	9 HP
Power supply	Water under pressure
Engine consumption	620 L/min @ 10 bar
Supply couplings	DSP65
Integrated misting system	1" BSP female inlet
Noise level	92.8 dB at 3 m
Ventilation type	PPV blowing
Application	Single door – houses, small apartment blocks

Optional accessories:

5m ventilation duct	I60.20.101	Protective cover	I60.20.017
High expansion foam adapter without coupling (products with coupling: see p. 52)	I60.20.105	-10° prop for negative tilt of fan	I60.20.130

Ventilation tactics in the catalogue or at www.leader-group.eu
Freely downloadable interactive ventilation courses at www.leadereducexpert.com
As part of our policy of constant research to improve our products, we reserve the right to modify our products' characteristics at any time without notice



LEADER Fan
EASY POW'AIR
TECHNOLOGY

WATER-DRIVEN FAN MH260

A concentrated, powerful jet of air due to:

- high-strength propeller matched to the power of the motor
- double-layer aluminum/ABS thermoplastic red shroud
- metal grille

Positioning from 0.90 m to 6 m in front of a door without loss of power for:

- more space to move about
- less noise inside the building

Automatic optimal +10° tilt when handle raised

Precise tilt adjustment

from -10° to +20° with indicator for optimization of direction of air stream up entrance steps or down into a semi-basement

Protective frame

with grey epoxy coating

Stable & easy to handle even on unstable ground due to large rear wheels

Integrated misting system

Characteristics

Model	MH260
Reference	I61.00.037
Open air flow	50 500 m ³ /h
PPV air flow according to AMCA	Pending
Weight (dry)	49 kg
Dimensions L x H x P	720 x 720 x 620 mm
Propeller diameter	580mm
Engine	Water-driven motor in aluminum with cutoff and control valve. With pressure gage
Engine power	9 HP
Power supply	Water under pressure
Engine consumption	620 L/min @ 10 bar
Supply couplings	DSP65
Integrated misting system	1" BSP female inlet
Noise level	92.8 dB at 3 m
Ventilation type	PPV blowing
Application	Single door (e.g. house, small apartment block) and double door (e.g. tall apartment block, mid-size industrial unit)

Optional accessories:

5m ventilation duct	I60.20.113	Protective cover	I60.20.097
High expansion foam adapter without coupling (products with coupling: see p. 52)	I60.20.116	-10° prop for negative tilt of fan	I60.20.108





Large-Flow Ventilators



These fans are mobile solutions for ventilating large or even very large volumes, e.g. Warehouses, Tunnels, Airports, Industrial Complexes, High-Rise Tower Blocks, etc.



NEW!

LARGE-FLOW VENTILATOR **EASY 2000**

Mobile large-volume ventilation system

The most powerful large-flow ventilator in its category for smoke removal, cooling and fire extinguishing in large volumes (covered / closed parking lots, warehouses, product line, exhibition halls, etc...)

Very powerful airflows: 150 000 m³/h
2 versions available for varied configurations:

- ▶ On Skid
 - movable and usable with forklift truck
 - mounted on THEIS trolley or similar
 - can be mounted on bed of vehicle, e.g. pickup truck
- ▶ Trailer-mounted

Extremely low weight for ease of deployment

- ▶ Less than 100 kg for the skid version
- ▶ Less than 450 kg for the trailer version

A motor control panel and an off-the-shelf wired remote control for tilt, elevation and lighting according to selected options

Possibility of elevation platform by 600 mm or 1200 mm as desired on lifting table controlled by wired remote control

Electric tilt of shroud from -10° to +20° controlled by wired remote control



Ventilation tactics in the catalogue or at www.leader-group.eu
 Freely downloadable interactive ventilation courses at www.leadereducexpert.com
 As part of our policy of constant research to improve our products, we reserve the right to modify our products' characteristics at any time without notice

Characteristics

Model	EASY 2000 on trailer			Skid EASY 2000		
Lift system	Sans	600 mm	1200 mm	Sans	600 mm	1200 mm
References	I60.30.124	I60.30.123	I60.30.120	I60.30.121	I60.30.125	I60.30.126
Open air flow	150 000 m3/h					
Propeller diameter	885 mm					
Height – mm	1715	1915	2050	1250	1510	1645
Width – mm	1430	1430	1430	1060	1060	1060
Length – mm	2800	2800	2800	1205	1205	1205
Weight – kg dry	301 kg	402 kg	447 kg	158 kg	275 kg	320 kg
Weight - kg in running mode	324 kg	425 kg	470 kg	178 kg	295 kg	340 kg
Mounting	Single-axle trailer with brakes, towball and sealed enclosure			Skid on red epoxy-painted steel chassis adaptable to bed of trailer, pick-up, truck, etc. (all delivered on pallet)		
Engine control panel	Mounted on the engine. Allows the operator to control: <ul style="list-style-type: none">▶ the starter▶ electrical start/stop▶ fan flow rate via the accelerator▶ rpm and hour-run time via the hour meter▶ oil level (warning light)					
Wired remote control	Control, from as far as 10m away: <ul style="list-style-type: none">▶ the tilt of the shroud from -10° to +20°▶ the rise and fall of the lifting table depending on the selected option▶ engine stop▶ turn LED spotlight on/off					
Engine	HONDA GX630					
Engine power	20.8 HP					
Tank	18 liters					
Fuel	unleaded petrol 95					
Runtime	3h05min					
Oil	Engine oil: 5W-30 synthetic API SJ or later (CASTROL MAGNATEC) Hydraulic oil for lifting option: CASTROL SAF XJ 75-140					
Battery	12V / 44 Ah battery to power the electrical equipment					
Noise level	93.9 dB at 7 m					
Use	PPV					
Application	Ventilating underground parking lots, industrial sites, warehouses, tunnels, etc.					

Optional accessories :

Manual 360° rotation system	For Skid version only. Add +265 mm height and +70 kg	Pending
Exhaust extension	L 2.5 m / Ø 50 mm Tip: use 3 exhaust extensions end to end for more efficiency	I60.30.003
Adapter for exhaust extension	For connecting the exhaust extension	I60.30.028
THEIS trolley	Aluminum trolley with handle and brake system for easy movement of the Skid EASY 2000. L 1.2 x D 0.8 x H 1.1 m	I60.30.119
LED headlight	For illuminating the blowing area or EASY 2000 itself when using the controls	Pending
Water or water+additive(s) misting system	260 L/min @ 7 bar	Pending
Blowing duct	6m / Ø 900 mm	I60.30.122
Blowing duct adapter	Ø 900 mm	I60.30.127
Gasoline (petrol) tank for trailer	20L jerry can on galvanized steel mounting	Pending
Ring Hitch (height-adjustable drawbar)	Allows trailer to be hitched with a ring system (over 70 kg necessitating a vehicle registration certificate depending on country of registration)	Pending



LARGE-FLOW VENTILATOR **EASY 4000**

Mobile large-volume ventilation system

A very effective solution for smoke removal and air cooling and renewal in large spaces (parking lots, tall apartment blocks, factories, storage facilities, exhibition venues, etc.)

Very powerful airflows: 400 000 m³/h

Very stable and extremely light for easy deployment

- Unrivalled combination of performance and maneuverability

Large

1200 mm diameter shroud with -10° to +20° tilt controlled from the control panel

With water or water+additive(s) misting system:

- 260 L/min @ 7 bar
- Range: up to 60 m

Possible configurations:

- On trailer
 - one person can easily position the trailer
 - total maximum weight less than 725 kg: Can be drawn by a light vehicle (European 'B' driver's license sufficient)
- On skid for installation on bed or vehicle (pick-up, truck, tank, railroad-going platform, etc.)



SKID VERSION

Ventilation tactics in the catalogue or at www.leader-group.eu
Freely downloadable interactive ventilation courses at www.leadereducexpert.com
As part of our policy of constant research to improve our products, we reserve the right to modify our products' characteristics at any time without notice

Characteristics

Model	EASY 4000 on trailer			Skid EASY 4000		
Lift system	Without	600 mm	120 mm	Without	600 mm	120 mm
Reference	I60.30.113	I60.30.114	I60.30.109	I60.30.110	I60.30.111	I60.30.112
Open air flow	400 000 m3/h					
Nominal air flow	185 000 m3/h					
Shroud diameter	1200mm					
Height – mm	2215	2185 à 2785	2315 à 3515	1618	1789 à 2389	1922 à 3122
Width – mm	1690	1690	1690	1474	1474	1474
Length – mm	3300	3300	3300	1809	1809	1809
Dry weight	546 kg	646 kg	691 kg	372 kg	472 kg	517 kg
Weight in running order	579 kg	679 kg	724 kg	405 kg	505 kg	550kg
Support	Trailer type-approved to European standards: AL-KO chassis / Tow ball (adjustable shaft and/or ring optional) / Wheel chocks for positioning when fan is running / Battery charger / 86 liters storage box <i>Registration may be required depending on the user's country</i>			Steel chassis painted in black epoxy <i>(all delivered on pallet)</i>		
Control panel	Mounted on the trailer / Protective cover supplied Ingress protection: IP55			Mounted on support (steel painted in red epoxy) Protective cover supplied / Ingress protection: IP55		
	Allows control of <ul style="list-style-type: none">▶ engine start and stop▶ tilt of shroud from -10° to +20°▶ airflow by adjusting the fan speed▶ raising and lowering the lifting table depending on selected option▶ emergency simultaneous engine stop, tilt and/or table rise					
Engine	BMW Flat Twin with catalytic converter - 1170 cm3 with electronic control - 115 HP – 2 cylinders – 4-stroke Electric start – Fuel consumption: 25 L/hour at full speed - Cooling: Air/Oil					
Tank	42 liters					
Fuel	unleaded petrol 95					
Runtime	1h40min					
Oil	Engine oil: 3.8 L (1 US gal) – API SL / Hydraulic oil for raising table option: 0.9 L – ISO32					
Battery	Rapid charge 12V / 15 Ah battery to power the electrical equipment					
Noise level	96 dB at 7 m					
Use	PPV					
Application	Ventilating underground parking lots, industrial sites, warehouses, tunnels, high rise buildings, etc.					

Optional accessories :

Wired remote control	Control from up to 13 m away: <ul style="list-style-type: none"> ▶ the tilt of the shroud from -10° to +20° ▶ airflow by adjusting the fan speed ▶ raising and lowering the lifting table depending on selected option ▶ engine stop 	I60.30.118
Manual 360° rotation system	For Skid version only. Add +175mm height and +70kg	I60.30.010
Protective cover	For trailer version only.	I60.30.004
Exhaust extension	L 2.5 m / Ø 80 mm - Tip: use 3 extensions end to end for more efficiency	I60.30.003
Adapter for exhaust extension	For connecting the exhaust extension	I60.30.017
Blowing duct	For channeling the air stream of the EASY 4000 in a straight line L 12m – Ø 1.7m – Outlet cross section 1.1m – 40 kg	I60.30.016
Extraction duct	Set of 3 ducts for a total length of 18 m. Up to 6 ducts can be interconnected. 1 duct = 575 mm / L 6m / 19 kg	I60.30.019





Ventilation accessories



Blowing ducts, extraction ducts, high-expansion foam adapter, misting nozzles, etc. are options that increase the number of ways a fan can be used and so circumvent the constraints of a given operation.



VENTILATION ACCESSORIES DUCTS

V-BOX: EXTRACTOR/BLOWER CONVERSION KIT

- ▶ The simple solution for:
 - converting an electric fan into a powerful cold smoke extractor
 - channel the air stream to ventilate confined spaces
- ▶ The ventilator is placed inside the V-Box cube in the desired direction of the airstream (extracting or blowing).
- ▶ The ducts quickly connect to the V-Box.
- ▶ Usable with multiple ducts upstream as well as downstream.
- ▶ Carry handles enable it to be used for transporting and protecting the fan.
- ▶ Base reinforced with plastic skids allowing it to be dragged.



Ductless V-Box cube

Reference	Characteristics	Adaptable to these fans:
I63.20.017	Red polyester and polypropylene cube with integrated rigid structure – With 2 male quick closures - Dim. H 58 x L 64 x D 51 cm - 3.5 kg	Electric : ES220 / ES230 / ESP230 / ESV230 / EDS230 / EVG 230
I63.20.014	M1 duct for V-Box cube with male & female quick couplings - Ø 400 mm / L 5 m / 11.5 kg	
I63.20.016	ZAG adaptor: with female quick clasp for locating on end of duct or directly on the V_BOX Cube - 1.450 kg	



V-Box in blowing mode



V-Box in extraction mode



Complete V-Box

LFV BLOWING DUCT

For channeling the air stream in a straight line



Reference	Characteristics	Adaptable to these fans:
I60.30.016	Ø 1700 mm / Ø sortie 1100 mm / lg 12 m / 40 kg	LFV: EASY 4000
I60.30.124	Ø 900 mm / lg 5 m	LFV: EASY 2000
I60.30.127	Duct adapter	

LFV EXTRACTION DUCT

For extracting smoke from large volumes.

Set of 3 ducts giving a total length of 18 m - No bulky adapter between duct and fan

Ability to interconnect up to 6 ducts - Integrated carrying bag.



Reference	Characteristics	Adaptable to these fans:
I60.30.019	1 duct Ø 575 mm / L 6 m / 19 kg	LFV: EASY 4000

Spiral WIRED VENTILATION DUCT

Excellent for channeling fan air or extracting smoke in complex operations!

Duct supplied with Integrated bag.



Reference	Characteristics	Adaptable to these fans:
I60.20.147	Ø 430 mm / L 5 m / 13 kg – Requires I60.20.149 adapter	Gasoline-driven: MT215L / MT225 Electric: BATfan / ES220
I60.20.101	Ø 430 mm / lg 5 m / 13 kg	Petrol-driven: MT236 / MT240 Electric: ES230 / ESP230 / ESV230 / EDS230 / EVG230 Water-driven: MH236
I60.20.113	Ø 600 mm / lg 5 m / 17,5 kg	Petrol-driven: MT245 / MT280 / MT296 Electric: ES245 / ESV245 / ESP280 / ESV280 / ParkFan80 Water-driven: MH260
I61.20.002	Ø 300 mm / lg 5 m / 12,8 kg	Electric: SA315
I61.20.011	ATEX / Ø 300 mm / lg 5 m / 13,1 kg	Atex: SAX320
I60.20.099	ATEX / Ø 430 mm / lg 5 m / 12,5 kg	Atex: ESX230

VENTILATION ACCESSORIES OPTIONS FOR FANS

MISTER

Offers the possibility of faster, more effective cooling
Flow rate 16 L/min at 7 bar



Reference	Characteristics	Adaptable to these fans:
I60.20.104	without coupling	Petrol-driven: MT236 / MT240 / MT245 / MT280 Electric: ES230 / ESP230 / ESV230 / ES245 / ESV245 / ESP280 / ESV280 / ParkFan80
I60.20.107	with GFR20 coupling	
I60.20.114	with BCN coupling	
I60.20.111	without coupling	
I60.20.118	with GFR20 coupling	Petrol-driven: MT296
I60.20.122	with BCN coupling	

HI-EXPANSION FOAM ADAPTER

Converts the fan into a high-expansion foam generator
Expansions from 400 to 800 - Works with an in-line proportioner at 200 L/min traditional (7 cu ft/min)



Reference	Characteristics	Adaptable to these fans:
I60.20.105	without coupling	Petrol-driven: MT215L / MT225 / MT236 / MT240 Electric: BATfan / ES220 / ES230 / ESP230 / ESV230 / ESX230 / EDS230 / EVG230 Water-driven: MH236
I60.20.103	with DSP40 coupling	
I60.20.106	with BCN coupling	
I60.20.124	with BIC coupling	
I60.20.116	without coupling	Petrol-driven: MT245 / MT280 / MT296 Electric: ES245 / ESV245 / ESP280 / ESV280 / ParkFan80 Water-driven: MH260
I60.20.117	with DSP40 coupling	
I60.20.121	with BCN coupling	
I60.20.123	with BIC coupling	

HORAMETRE

Shows the engine rpm and hours-run time of petrol-driven fans.



Reference	Characteristics	Adaptable to these fans:
I60.20.135	-	Petrol-driven: MT215L / MT236 / MT245 / MT280 / MT296 / MT240

PROLONGATEUR D'ECHAPPEMENT

For expelling exhaust gases outside of room where fan is operating or far from extraction area, in order to limit the introduction of gases such as CO.
Complies with DIN 14-572.



Reference	Characteristics	Adaptable to these fans:
I60.20.012	Lg 2,5 m / Ø 50 mm	Petrol-driven: MT236 / MT240 / MT245 / MT280 / MT296 / LFV EASY 2000
I60.30.003	Lg 2,5 m / Ø 80 mm	
		LFV: EASY 4000

EXHAUST ADAPTER

For connecting the exhaust extension



Reference	Characteristics	Adaptable to these fans:
I60.20.014	for Honda engines	Petrol-driven: MT236 / MT240 / MT245
I60.20.125	for Honda engines	Petrol-driven: MT280
-	Integrated with the machine	Petrol-driven: MT296
I60.30.017	for BMW engine	LFV: EASY 4000

CO-REDUCING CATALYTIC CONVERTER

Reduces majority of CO emissions from Honda GX160 and GX200 engines through use of the LEADER cat converter.

Compatible with exhaust extensions.



Reference	Characteristics	Adaptable to these fans:
I60.20.142	Stainless steel body – 400g – Dim. L 85 x W 62 x D 70 mm	Petrol-driven: MT236 / MT240 / MT245

-10° PROP

Allows a negative tilt (-10°) for ventilating downwards or into a semi-basement.



Reference	Characteristics	Adaptable to these fans:
I60.20.130	0.5 kg - Stainless steel tubing	Petrol-driven: MT236 Electric: ES230 / ESP230 / ESV230
I60.20.108	0.5 kg - Stainless steel tubing	Petrol-driven: MT245 / MT280 / MT296 Electric: ES245 / ESV245 / ESP280 / ESV280 Water-driven: MH236 / MH260 / ParkFan80

EXTENSION CABLE

Extra-flexible cable coiled in a bag designed to unwind without tangling and with lockable plugs.



Reference	Characteristics	Adaptable to these fans:
I63.00.016	L 100 m with lockable 220V plugs / 12 kg	Electric: BATfan / SR460

20,000 VOLT INSULATING TELESCOPIC PIKE-POLE

Ideal for making heat and smoke vents.
Extendable, fiber glass. Can be locked at any length.
Body complies with IEC 61235 and IEC 60855



Reference	Characteristics
O20.00.116	Length: retracted 2.20m / extended 3.85m Ø 3.8 cm - 3kg Elongation resistance of pike pole 100 kg

DOOR WEDGE

Peut être placée en différents emplacements sur une porte pour la maintenir ouverte



Reference	Characteristics
I60.20.112	Can be placed in different positions on a door so as to keep it open

Protective cover

Can be placed in various positions on a door to keep it open



Reference	Adaptable to these fans:
I60.20.017	Petrol-driven: MT236 / MT240 Electric: ES230 / ESP230 / ESV230 Water-driven: MH236
I60.20.097	Petrol-driven: MT245 / MT260 / MT280 / MT296 Electric: ESP280 / ESV280 Water-driven: MH260



WARRANTY

LEADER guarantees the LEADER Fan range of equipment from the date of acceptance by the customer.

The respective warranty periods are as follows:

- ▶ Portable fans = 2 years
- ▶ Easy 2000 = 1 year
- ▶ Easy 4000 = 1 year
- ▶ Accessories (mister, hour meter, V-Box, LEADER Cat, foam adapter, etc.) = 1 year
- ▶ Batteries = 6 months

This warranty does not apply where it has been found by our services that the equipment was damaged by:

- ▶ Normal wear due to operation
- ▶ Improper use of the equipment
- ▶ Accidents arising from carelessness
- ▶ Poor maintenance
- ▶ Failure to follow the standards and instructions of the manufacturer
- ▶ Improper storage

Consumables, such as feet, cables, blowing or extraction ducts, paint and labels, filters, spark plug, oil, wheels, seals, bulbs, etc. are excluded from this warranty if defects are discovered after using the product.



ALWAYS IN TOUCH WITH OUR CLIENTS
TO DESIGN THE PRODUCTS YOU WILL
NEED **IN THE FUTURE**



Foam concentrates & Foam Equipment



Mobile ventilation



Search and rescue equipment



Fire training equipment

HEAD OFFICE

LEADER S.A.S.

ZI des Hautes-Vallées - Chemin n° 34 - CS20014 - 76930 Octeville sur Mer - France

Tel : +33 (0)235 530575 - Fax : +33 (0)235 531632

info@leader-group.eu

SUBSIDIARIES

LEADER GmbH

Zur Fabrik 10 - 66271 Kleinblittersdorf - Germany

Tel. : +49 (0) 6805/60067-0 - Fax : +49 (0) 6805/60067-10

info@leader-gmbh.de

LEADER NORTH AMERICA Inc.

109-A Summerville Drive, Mooresville, NC28115 - U.S.A

Tel: + 1 (0)704-662-3377 - Fax: + 1 (0)704-662-3397

info@LeaderNorthAmerica.com

AGENCIES

SPAIN / PORTUGAL / LATIN AMERICA

spain.portugal.latinamerica@leader-group.eu

CHINA / HONG KONG / MACAU

china@leader-group.eu

www.leader-group.eu